

CANADA SENSORS TECHNOLOGY INC.



Manufacturer of Advanced Technology Pressure & Level Transmitters

CRN Approval ISO 9001:2015



LIQUID LEVEL TRANSMITTER – PROCESS 10 HART™ Enabled General Purpose Model

Submersible Pump Lift Station / Sludge Level Transmitter / Long Range Depth Transmitter

Canada Sensors *intelligent* transmitters bring the latest technology to the pressure transmitter & related instrumentation market-place with self-diagnostic features which will maintain consistent accuracy throughout temperature and pressure scales.

SPECIFICATIONS & TECHNICAL DATA

- ✓ Eliminate Output Drift
 - ✓ On-board RTD
 - ✓ All 316SS Construction (Wetted Parts)
 - ✓ IP 68 Rated PTFE Vent
 - ✓ Circuit Protection RFI and EMI surge protection
 - ✓ 316SS Breathable Encapsulated Wire Tubing (BEWT)
(Tubing Length from 12 inches (30 cm) to 9 miles (15 KM)
- Optional: Large 3" Non-clog 316SS Diaphragm c/w
Protective Cage for Heavy Slurry Applications,
Pipe Mounting Bracket,
900 MHz Radio
Satellite Monitoring System
(Real time information to your phone, computer or PLC)
- ✓ 3 Year Conditional Warranty (Serial Number Traceability)
 - ✓ Laser Welded
 - ✓ External Pressures to 15,000 PSI

Smart THROUGH and THROUGH

**This transmitter packs a powerful punch
No drift. No set-up. It just works.**

Contact Us:

sales@canadasensors.com
www.canadasensors.com

**Manufacturer of Advanced Technology
Level and Pressure Transmitters**

sales@canadasensors.com

HART™ Enabled

Two Wire 4-20 mA Output Pressure Transmitter

Temperature compensation, through a mathematical formula, will occur at multiple levels throughout the range of the pressure transmitter offering highly accurate information.

The Process 10 transmitter has an optional on-board barometric calibration chip. This is a self-adjusting feature with zero drift at any altitude or day or night. The transmitter does not require any external adjustments.

Highly accurate and repeatable 0.075% to 0.25% (or better) full scale accuracy depending on conditions

Operating pressure ranges from 5 PSI and up

Digitally mapped error correction throughout the level range

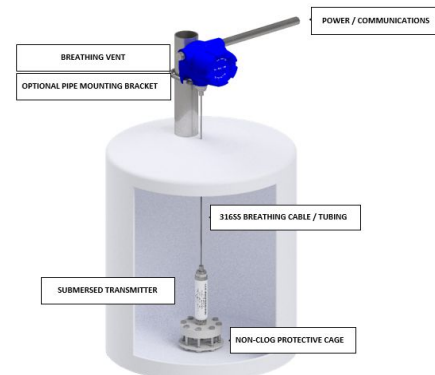
Individually characterized sensor head -316SS silicone oil filled sensor

Optional corrosion Inhibiting feature is available on the Process 10 model. This PTFE corrosion protection protects from ambient conditions such as UV rays, humidity, sand, sea-spray, hydrogen sulfide environments, and most chemicals. (PTFE is not available on 3" diaphragm model)

PTFE coating on the process connection provides protection from corrosive media

Multiple Electrical Connectors & Housings Available

316SS Process Connection Materials are standard



Technical Specifications

Performance

| | |
|------------------------|--|
| Accuracy: | 0.075 to 0.25% Full Scale Output depending on conditions |
| Stability: | 0.075 to 0.25% Full Scale Output depending on conditions |
| Temperature Range: | -4C to +60C Calibrated |
| Temperature Accuracy: | 0.075 to 0.25% Full Scale Output depending on conditions |
| Pressure Cycles: | n/a |
| Over Range Protection: | 2 x Full Scale Output |
| Burst Pressure: | 5 x Full Scale Output |

Electrical Data

| | |
|-----------------------------|--|
| Excitation: | 14-33 VDC (product accessories may alter excitation values) |
| Comms: | HART Protocol |
| Current Consumption: | 3.8 mA |
| Zero Offset: | 4 mA |
| Span Tolerance: | Range or Sensor with Turndown |
| Output Load: | 500 OHMS |
| Barometric Chip (optional): | Monitoring Range 88KPA (12.76 PSI) to 108 KPA (15.7 PSI) |
| RTD Temperature: | On Board 100 ohm Platinum |
| | |

Pollution Degree 4
Installation Category I

NOTE: An Ex Barrier is required for any connections that cross the boundary from an Ordinary Location (Non-Classified/Non-Hazardous) to a Classified (Hazardous) location

Environmental Data

Temperature

| | |
|-----------------------|---|
| Operating: | -4C to +60C |
| Storage: | -55C to +125C |
| Thermal Limits | |
| Compensated Range: | -4C to +60C |
| Temp Comp Zero: | 0.075 to 0.25% Full Scale Output @ +50C |
| Temp Comp Span: | 0.075 to 0.25% Full Scale Output @ +50C |

Physical Data

| | |
|--|---|
| Sensor: | PFAC-8 Treatment is standard on all Silicone Oil Filled 316SS, Inconel-718, Titanium, Hastalloy-276 |
| Vibration: | 25gRMS from 20Hz to 2000Hz |
| Shock: | 100g , half sine, 11mSec. |
| NOTE: Silicone Oil Filled Sensors are standard for low pressure | |
| Process Connection: | 1/4" MNPT Flushmount w/ Nose Cone or 316SS 3" Flush Non-clog Diaphragm w/protective cage |
| Electrical Connection: | 1/4" Compression x 1/2' MNPT Bored Tubing Connector w/ BEWT; XP Enclosures (complete system) |
| Optional: | WIFI or LTE-M Cellular Wireless Remote Data Transmission |

NOTE: 316SS Wetted Parts are the minimum requirement for NACE compliance

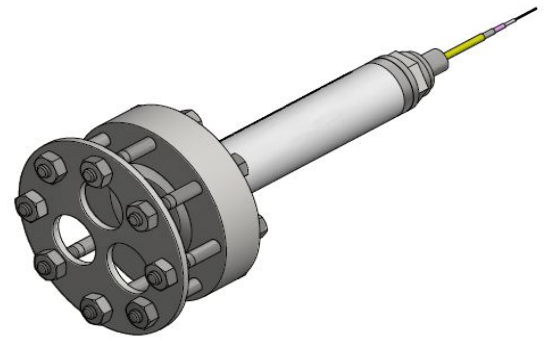
Process Connections:



1/4" MNPT FLUSHMOUNT



Nose Cone

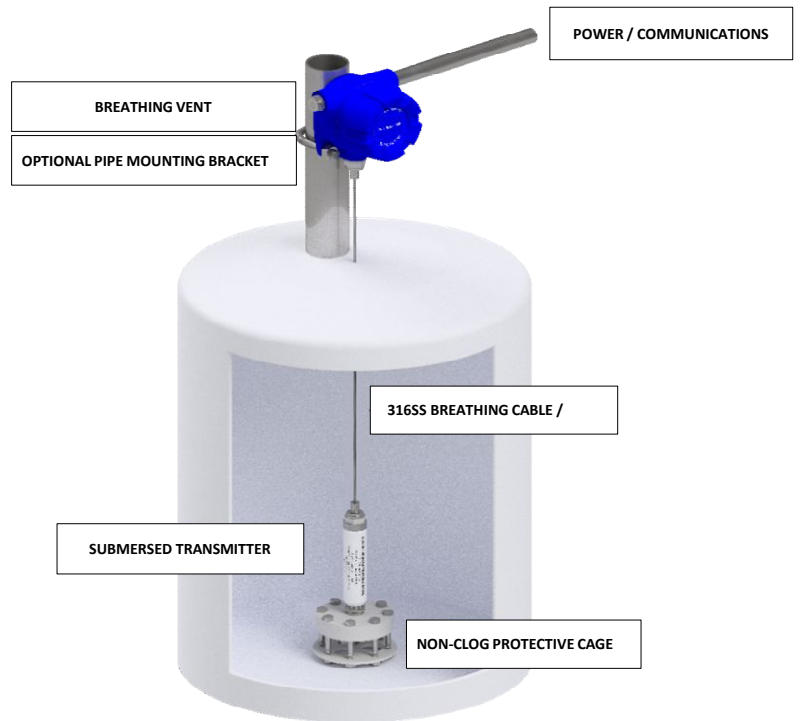


316SS 3" Flush Non-clog Diaphragm & Cage

Electrical Connections:



1/4" x 1/2" Bored Tubing Connector



Product Accessories:

Aluminum XP Head (1/2" FNPT x 3) - Blank - No Window

Aluminum XP Head (1/2" FNPT x 3) - w/ 3 1/2 + Digits LCD Loop Powered Display

Aluminum XP Head (1/2" FNPT x 3) - w/ 5 Digit LCD Loop Powered Display



Product Nomenclature

MODEL: Liquid Level Transmitter - Process 10

PN Example: A-B-C-D-E-F-G-H-I-J-K-L-M-N

LL10-01-01-01-850-025-14-02-L08-01-01-01-02-02:

Process 10 Transmitter, 4-20 mA, HART Enabled, Gauge (PSIG), .850 Specific Gravity, 25 ft maximum liquid height, 1/2" MNPT Flushmount w/ 3" Flush Non-clog Diaphragm & Cage 316SS, 316SS Wetted Parts, 1/4" Compression x 1/2" MNPT Bored Tubing Connector w/ 45 ft BEWT, Head - Blank No Window, No Mounting Bracket, No Monitoring, No Treatment, 0.25% Accuracy

| | A | B | C | D | E | F | G | H | I | J | K | M | N |
|--|---|---|---|---|---|---|---|---|---|---|---|---|---|
|--|---|---|---|---|---|---|---|---|---|---|---|---|---|

Model
 LL10 - Process 10

Output
 01 - 4-20 mA

Calibration Adjustment
 01 - HART Enabled

Pressure Reference
 01 - Gauge (PSIG)

Specific Gravity (water 1,000 kg/m3 = 1) Specific gravity of a liquid is the "ratio of the density of the liquid - to the density of water at 4°C"

- 700 - 0.700
- 701 - 0.701
- 702 - 0.702
- 703 - 0.703
- 704 - 0.704
- 705 - 0.705
- 706 - 0.706
- 707 - 0.707
- 708 - 0.708
- 709 - 0.709
- 710 - 0.710
- 711 - 0.711
- 712 - 0.712
- 713 - 0.713
- 714 - 0.714
- 715 - 0.715
- 716 - 0.716
- 717 - 0.717
- 718 - 0.718
- 719 - 0.719
- 720 - 0.720
- 721 - 0.721
- 722 - 0.722
- 723 - 0.723
- 724 - 0.724
- 725 - 0.725
- 726 - 0.726
- 727 - 0.727
- 728 - 0.728
- 729 - 0.729
- 730 - 0.730
- 731 - 0.731
- 732 - 0.732
- 733 - 0.733
- 734 - 0.734
- 735 - 0.735
- 736 - 0.736
- 737 - 0.737
- 738 - 0.738
- 739 - 0.739
- 740 - 0.740
- 741 - 0.741
- 742 - 0.742
- 743 - 0.743
- 744 - 0.744
- 745 - 0.745
- 746 - 0.746
- 747 - 0.747
- 748 - 0.748
- 749 - 0.749
- 750 - 0.750
- 751 - 0.751
- 752 - 0.752
- 753 - 0.753
- 754 - 0.754
- 755 - 0.755
- 756 - 0.756
- 757 - 0.757
- 758 - 0.758
- 759 - 0.759
- 760 - 0.760
- 761 - 0.761
- 762 - 0.762
- 763 - 0.763
- 764 - 0.764
- 765 - 0.765
- 766 - 0.766
- 767 - 0.767
- 768 - 0.768

| | |
|-----|-------|
| 769 | 0.769 |
| 770 | 0.770 |
| 771 | 0.771 |
| 772 | 0.772 |
| 773 | 0.773 |
| 774 | 0.774 |
| 775 | 0.775 |
| 776 | 0.776 |
| 777 | 0.777 |
| 778 | 0.778 |
| 779 | 0.779 |
| 780 | 0.780 |
| 781 | 0.781 |
| 782 | 0.782 |
| 783 | 0.783 |
| 784 | 0.784 |
| 785 | 0.785 |
| 786 | 0.786 |
| 787 | 0.787 |
| 788 | 0.788 |
| 789 | 0.789 |
| 790 | 0.790 |
| 791 | 0.791 |
| 792 | 0.792 |
| 793 | 0.793 |
| 794 | 0.794 |
| 795 | 0.795 |
| 796 | 0.796 |
| 797 | 0.797 |
| 798 | 0.798 |
| 799 | 0.799 |
| 800 | 0.800 |
| 801 | 0.801 |
| 802 | 0.802 |
| 803 | 0.803 |
| 804 | 0.804 |
| 805 | 0.805 |
| 806 | 0.806 |
| 807 | 0.807 |
| 808 | 0.808 |
| 809 | 0.809 |
| 810 | 0.810 |
| 811 | 0.811 |
| 812 | 0.812 |
| 813 | 0.813 |
| 814 | 0.814 |
| 815 | 0.815 |
| 816 | 0.816 |
| 817 | 0.817 |
| 818 | 0.818 |
| 819 | 0.819 |
| 820 | 0.820 |
| 821 | 0.821 |
| 822 | 0.822 |
| 823 | 0.823 |
| 824 | 0.824 |
| 825 | 0.825 |
| 826 | 0.826 |
| 827 | 0.827 |
| 828 | 0.828 |
| 829 | 0.829 |
| 830 | 0.830 |
| 831 | 0.831 |
| 832 | 0.832 |
| 833 | 0.833 |
| 834 | 0.834 |
| 835 | 0.835 |
| 836 | 0.836 |
| 837 | 0.837 |
| 838 | 0.838 |
| 839 | 0.839 |
| 840 | 0.840 |
| 841 | 0.841 |
| 842 | 0.842 |
| 843 | 0.843 |
| 844 | 0.844 |
| 845 | 0.845 |
| 846 | 0.846 |
| 847 | 0.847 |
| 848 | 0.848 |
| 849 | 0.849 |
| 850 | 0.850 |
| 851 | 0.851 |
| 852 | 0.852 |
| 853 | 0.853 |
| 854 | 0.854 |
| 855 | 0.855 |
| 856 | 0.856 |
| 857 | 0.857 |
| 858 | 0.858 |
| 859 | 0.859 |
| 860 | 0.860 |

861 0.861

| | |
|-----|-------|
| 862 | 0.862 |
| 863 | 0.863 |
| 864 | 0.864 |
| 865 | 0.865 |
| 866 | 0.866 |
| 867 | 0.867 |
| 868 | 0.868 |
| 869 | 0.869 |
| 870 | 0.870 |
| 871 | 0.871 |
| 872 | 0.872 |
| 873 | 0.873 |
| 874 | 0.874 |
| 875 | 0.875 |
| 876 | 0.876 |
| 877 | 0.877 |
| 878 | 0.878 |
| 879 | 0.879 |
| 880 | 0.880 |
| 881 | 0.881 |
| 882 | 0.882 |
| 883 | 0.883 |
| 884 | 0.884 |
| 885 | 0.885 |
| 886 | 0.886 |
| 887 | 0.887 |
| 888 | 0.888 |
| 889 | 0.889 |
| 890 | 0.890 |
| 891 | 0.891 |
| 892 | 0.892 |
| 893 | 0.893 |
| 894 | 0.894 |
| 895 | 0.895 |
| 896 | 0.896 |
| 897 | 0.897 |
| 898 | 0.898 |
| 899 | 0.899 |
| 900 | 0.900 |
| 901 | 0.901 |
| 902 | 0.902 |
| 903 | 0.903 |
| 904 | 0.904 |
| 905 | 0.905 |
| 906 | 0.906 |
| 907 | 0.907 |
| 908 | 0.908 |
| 909 | 0.909 |
| 910 | 0.910 |
| 911 | 0.911 |
| 912 | 0.912 |
| 913 | 0.913 |
| 914 | 0.914 |
| 915 | 0.915 |
| 916 | 0.916 |
| 917 | 0.917 |
| 918 | 0.918 |
| 919 | 0.919 |
| 920 | 0.920 |
| 921 | 0.921 |
| 922 | 0.922 |
| 923 | 0.923 |
| 924 | 0.924 |
| 925 | 0.925 |
| 926 | 0.926 |
| 927 | 0.927 |
| 928 | 0.928 |
| 929 | 0.929 |
| 930 | 0.930 |
| 931 | 0.931 |
| 932 | 0.932 |
| 933 | 0.933 |
| 934 | 0.934 |
| 935 | 0.935 |
| 936 | 0.936 |
| 937 | 0.937 |
| 938 | 0.938 |
| 939 | 0.939 |
| 940 | 0.940 |
| 941 | 0.941 |
| 942 | 0.942 |
| 943 | 0.943 |
| 944 | 0.944 |
| 945 | 0.945 |
| 946 | 0.946 |
| 947 | 0.947 |
| 948 | 0.948 |
| 949 | 0.949 |
| 950 | 0.950 |
| 951 | 0.951 |

| | |
|------|-------|
| 952 | 0.952 |
| 953 | 0.953 |
| 954 | 0.954 |
| 955 | 0.955 |
| 956 | 0.956 |
| 957 | 0.957 |
| 958 | 0.958 |
| 959 | 0.959 |
| 960 | 0.960 |
| 961 | 0.961 |
| 962 | 0.962 |
| 963 | 0.963 |
| 964 | 0.964 |
| 965 | 0.965 |
| 966 | 0.966 |
| 967 | 0.967 |
| 968 | 0.968 |
| 969 | 0.969 |
| 970 | 0.970 |
| 971 | 0.971 |
| 972 | 0.972 |
| 973 | 0.973 |
| 974 | 0.974 |
| 975 | 0.975 |
| 976 | 0.976 |
| 977 | 0.977 |
| 978 | 0.978 |
| 979 | 0.979 |
| 980 | 0.980 |
| 981 | 0.981 |
| 982 | 0.982 |
| 983 | 0.983 |
| 984 | 0.984 |
| 985 | 0.985 |
| 986 | 0.986 |
| 987 | 0.987 |
| 988 | 0.988 |
| 989 | 0.989 |
| 990 | 0.990 |
| 991 | 0.991 |
| 992 | 0.992 |
| 993 | 0.993 |
| 994 | 0.994 |
| 995 | 0.995 |
| 996 | 0.996 |
| 997 | 0.997 |
| 998 | 0.998 |
| 999 | 0.999 |
| 1000 | 1.000 |
| 1001 | 1.001 |
| 1002 | 1.002 |
| 1003 | 1.003 |
| 1004 | 1.004 |
| 1005 | 1.005 |
| 1006 | 1.006 |
| 1007 | 1.007 |
| 1008 | 1.008 |
| 1009 | 1.009 |
| 1010 | 1.010 |
| 1011 | 1.011 |
| 1012 | 1.012 |
| 1013 | 1.013 |
| 1014 | 1.014 |
| 1015 | 1.015 |
| 1016 | 1.016 |
| 1017 | 1.017 |
| 1018 | 1.018 |
| 1019 | 1.019 |
| 1020 | 1.020 |
| 1021 | 1.021 |
| 1022 | 1.022 |
| 1023 | 1.023 |
| 1024 | 1.024 |
| 1025 | 1.025 |
| 1026 | 1.026 |
| 1027 | 1.027 |
| 1028 | 1.028 |
| 1029 | 1.029 |
| 1030 | 1.030 |
| 1031 | 1.031 |
| 1032 | 1.032 |
| 1033 | 1.033 |
| 1034 | 1.034 |
| 1035 | 1.035 |
| 1036 | 1.036 |
| 1037 | 1.037 |
| 1038 | 1.038 |
| 1039 | 1.039 |
| 1040 | 1.040 |
| 1041 | 1.041 |

1042

1.042

| | |
|------|-------|
| 1043 | 1.043 |
| 1044 | 1.044 |
| 1045 | 1.045 |
| 1046 | 1.046 |
| 1047 | 1.047 |
| 1048 | 1.048 |
| 1049 | 1.049 |
| 1050 | 1.050 |
| 1051 | 1.051 |
| 1052 | 1.052 |
| 1053 | 1.053 |
| 1054 | 1.054 |
| 1055 | 1.055 |
| 1056 | 1.056 |
| 1057 | 1.057 |
| 1058 | 1.058 |
| 1059 | 1.059 |
| 1060 | 1.060 |
| 1061 | 1.061 |
| 1062 | 1.062 |
| 1063 | 1.063 |
| 1064 | 1.064 |
| 1065 | 1.065 |
| 1066 | 1.066 |
| 1067 | 1.067 |
| 1068 | 1.068 |
| 1069 | 1.069 |
| 1070 | 1.070 |
| 1071 | 1.071 |
| 1072 | 1.072 |
| 1073 | 1.073 |
| 1074 | 1.074 |
| 1075 | 1.075 |
| 1076 | 1.076 |
| 1077 | 1.077 |
| 1078 | 1.078 |
| 1079 | 1.079 |
| 1080 | 1.080 |
| 1081 | 1.081 |
| 1082 | 1.082 |
| 1083 | 1.083 |
| 1084 | 1.084 |
| 1085 | 1.085 |
| 1086 | 1.086 |
| 1087 | 1.087 |
| 1088 | 1.088 |
| 1089 | 1.089 |
| 1090 | 1.090 |
| 1091 | 1.091 |
| 1092 | 1.092 |
| 1093 | 1.093 |
| 1094 | 1.094 |
| 1095 | 1.095 |
| 1096 | 1.096 |
| 1097 | 1.097 |
| 1098 | 1.098 |
| 1099 | 1.099 |
| 1100 | 1.100 |
| 1101 | 1.101 |
| 1102 | 1.102 |
| 1103 | 1.103 |
| 1104 | 1.104 |
| 1105 | 1.105 |
| 1106 | 1.106 |
| 1107 | 1.107 |
| 1108 | 1.108 |
| 1109 | 1.109 |
| 1110 | 1.110 |
| 1111 | 1.111 |
| 1112 | 1.112 |
| 1113 | 1.113 |
| 1114 | 1.114 |
| 1115 | 1.115 |
| 1116 | 1.116 |
| 1117 | 1.117 |
| 1118 | 1.118 |
| 1119 | 1.119 |
| 1120 | 1.120 |
| 1121 | 1.121 |
| 1122 | 1.122 |
| 1123 | 1.123 |
| 1124 | 1.124 |
| 1125 | 1.125 |
| 1126 | 1.126 |
| 1127 | 1.127 |
| 1128 | 1.128 |
| 1129 | 1.129 |
| 1130 | 1.130 |
| 1131 | 1.131 |
| 1132 | 1.132 |
| 1133 | 1.133 |
| 1134 | 1.134 |

1135

1.135

1136 1.136
1137 1.137
1138 1.138
1139 1.139
1140 1.140
1141 1.141
1142 1.142
1143 1.143
1144 1.144
1145 1.145
1146 1.146
1147 1.147
1148 1.148
1149 1.149
1150 1.150
1151 1.151
1152 1.152
1153 1.153
1154 1.154
1155 1.155
1156 1.156
1157 1.157
1158 1.158
1159 1.159
1160 1.160
1161 1.161
1162 1.162
1163 1.163
1164 1.164
1165 1.165
1166 1.166
1167 1.167
1168 1.168
1169 1.169
1170 1.170
1171 1.171
1172 1.172
1173 1.173
1174 1.174
1175 1.175
1176 1.176
1177 1.177
1178 1.178
1179 1.179
1180 1.180
1181 1.181
1182 1.182
1183 1.183
1184 1.184
1185 1.185
1186 1.186
1187 1.187
1188 1.188
1189 1.189
1190 1.190
1191 1.191
1192 1.192
1193 1.193
1194 1.194
1195 1.195
1196 1.196
1197 1.197
1198 1.198
1199 1.199
1200 1.200
1201 1.201
1202 1.202
1203 1.203
1204 1.204
1205 1.205
1206 1.206
1207 1.207
1208 1.208
1209 1.209
1210 1.210
1211 1.211
1212 1.212
1213 1.213
1214 1.214
1215 1.215
1216 1.216
1217 1.217
1218 1.218
1219 1.219
1220 1.220
1221 1.221
1222 1.222
1223 1.223
1224 1.224
1225 1.225

| | |
|------|--------------------------|
| 1226 | 1.226 |
| 1227 | 1.227 |
| 1228 | 1.228 |
| 1229 | 1.229 |
| 1230 | 1.230 |
| 1231 | 1.231 |
| 1232 | 1.232 |
| 1233 | 1.233 |
| 1234 | 1.234 |
| 1235 | 1.235 |
| 1236 | 1.236 |
| 1237 | 1.237 |
| 1238 | 1.238 |
| 1239 | 1.239 |
| 1240 | 1.240 |
| 1241 | 1.241 |
| 1242 | 1.242 |
| 1243 | 1.243 |
| 1244 | 1.244 |
| 1245 | 1.245 |
| 1246 | 1.246 |
| 1247 | 1.247 |
| 1248 | 1.248 |
| 1249 | 1.249 |
| 1250 | 1.250 |
| 1251 | 1.251 |
| 1252 | 1.252 |
| 1253 | 1.253 |
| 1254 | 1.254 |
| 1255 | 1.255 |
| 1256 | 1.256 |
| 1257 | 1.257 |
| 1258 | 1.258 |
| 1259 | 1.259 |
| 1260 | 1.260 |
| 1261 | 1.261 |
| 1262 | 1.262 |
| 1263 | 1.263 |
| 1264 | 1.264 |
| 1265 | 1.265 |
| 1266 | 1.266 |
| 1267 | 1.267 |
| 1268 | 1.268 |
| 1269 | 1.269 |
| 1270 | 1.270 |
| 1271 | 1.271 |
| 1272 | 1.272 |
| 1273 | 1.273 |
| 1274 | 1.274 |
| 1275 | 1.275 |
| 1276 | 1.276 |
| 1277 | 1.277 |
| 1278 | 1.278 |
| 1279 | 1.279 |
| 1280 | 1.280 |
| 1281 | 1.281 |
| 1282 | 1.282 |
| 1283 | 1.283 |
| 1284 | 1.284 |
| 1285 | 1.285 |
| 1286 | 1.286 |
| 1287 | 1.287 |
| 1288 | 1.288 |
| 1289 | 1.289 |
| 1290 | 1.290 |
| 1291 | 1.291 |
| 1292 | 1.292 |
| 1293 | 1.293 |
| 1294 | 1.294 |
| 1295 | 1.295 |
| 1296 | 1.296 |
| 1297 | 1.297 |
| 1298 | 1.298 |
| 1299 | 1.299 |
| 1300 | 1.300 |
| 9999 | Specific Gravity - Other |

Liquid Level - Maximum Height (ft)

| | |
|-----|-------|
| 001 | 1 ft |
| 002 | 2 ft |
| 003 | 3 ft |
| 004 | 4 ft |
| 005 | 5 ft |
| 006 | 6 ft |
| 007 | 7 ft |
| 008 | 8 ft |
| 009 | 9 ft |
| 010 | 10 ft |
| 011 | 11 ft |
| 012 | 12 ft |

| | |
|-----|---------------|
| 013 | 13 ft |
| 014 | 14 ft |
| 015 | 15 ft |
| 016 | 16 ft |
| 017 | 17 ft |
| 018 | 18 ft |
| 019 | 19 ft |
| 020 | 20 ft |
| 021 | 21 ft |
| 022 | 22 ft |
| 023 | 23 ft |
| 024 | 24 ft |
| 025 | 25 ft |
| 026 | 26 ft |
| 027 | 27 ft |
| 028 | 28 ft |
| 029 | 29 ft |
| 030 | 30 ft |
| 031 | 31 ft |
| 032 | 32 ft |
| 033 | 33 ft |
| 034 | 34 ft |
| 035 | 35 ft |
| 036 | 36 ft |
| 037 | 37 ft |
| 038 | 38 ft |
| 039 | 39 ft |
| 040 | 40 ft |
| 041 | 41 ft |
| 042 | 42 ft |
| 043 | 43 ft |
| 044 | 44 ft |
| 045 | 45 ft |
| 046 | 46 ft |
| 047 | 47 ft |
| 048 | 48 ft |
| 049 | 49 ft |
| 050 | 50 ft |
| 051 | 51 ft |
| 052 | 52 ft |
| 053 | 53 ft |
| 054 | 54 ft |
| 055 | 55 ft |
| 056 | 56 ft |
| 057 | 57 ft |
| 058 | 58 ft |
| 059 | 59 ft |
| 060 | 60 ft |
| 061 | 61 ft |
| 062 | 62 ft |
| 063 | 63 ft |
| 064 | 64 ft |
| 065 | 65 ft |
| 066 | 66 ft |
| 067 | 67 ft |
| 068 | 68 ft |
| 069 | 69 ft |
| 070 | 70 ft |
| 071 | 71 ft |
| 072 | 72 ft |
| 073 | 73 ft |
| 074 | 74 ft |
| 075 | 75 ft |
| 076 | 76 ft |
| 077 | 77 ft |
| 078 | 78 ft |
| 079 | 79 ft |
| 080 | 80 ft |
| 081 | 81 ft |
| 082 | 82 ft |
| 083 | 83 ft |
| 084 | 84 ft |
| 085 | 85 ft |
| 086 | 86 ft |
| 087 | 87 ft |
| 088 | 88 ft |
| 089 | 89 ft |
| 090 | 90 ft |
| 091 | 91 ft |
| 092 | 92 ft |
| 093 | 93 ft |
| 094 | 94 ft |
| 095 | 95 ft |
| 096 | 96 ft |
| 097 | 97 ft |
| 098 | 98 ft |
| 099 | 99 ft |
| 100 | 100 ft |
| 999 | Custom Length |

Process Connection

13 - 1/4" MNPT w/ Nose Cone

14 - 1/2" MNPT w/ 3" Flush Non-clog Diaphragm & Cage 316SS (Maximum Pressure 1,500 PSI)

Wetted Parts

02 - 316SS

Electrical Connection

- L01 - 1/4" Compression x 1/2' MNPT Bored Tubing Connector w/ 10 ft BEWT
- L02 - 1/4" Compression x 1/2' MNPT Bored Tubing Connector w/ 15 ft BEWT
- L03 - 1/4" Compression x 1/2' MNPT Bored Tubing Connector w/ 20 ft BEWT
- L04 - 1/4" Compression x 1/2' MNPT Bored Tubing Connector w/ 25 ft BEWT
- L05 - 1/4" Compression x 1/2' MNPT Bored Tubing Connector w/ 30 ft BEWT
- L06 - 1/4" Compression x 1/2' MNPT Bored Tubing Connector w/ 35 ft BEWT
- L07 - 1/4" Compression x 1/2' MNPT Bored Tubing Connector w/ 40 ft BEWT
- L08 - 1/4" Compression x 1/2' MNPT Bored Tubing Connector w/ 45 ft BEWT
- L09 - 1/4" Compression x 1/2' MNPT Bored Tubing Connector w/ 50 ft BEWT
- L10 - 1/4" Compression x 1/2' MNPT Bored Tubing Connector w/ 55 ft BEWT
- L11 - 1/4" Compression x 1/2' MNPT Bored Tubing Connector w/ 60 ft BEWT
- L12 - 1/4" Compression x 1/2' MNPT Bored Tubing Connector w/ 65 ft BEWT
- L13 - 1/4" Compression x 1/2' MNPT Bored Tubing Connector w/ 70 ft BEWT
- L14 - 1/4" Compression x 1/2' MNPT Bored Tubing Connector w/ 75 ft BEWT
- L15 - 1/4" Compression x 1/2' MNPT Bored Tubing Connector w/ 80 ft BEWT
- L16 - 1/4" Compression x 1/2' MNPT Bored Tubing Connector w/ 85 ft BEWT
- L17 - 1/4" Compression x 1/2' MNPT Bored Tubing Connector w/ 90 ft BEWT
- L18 - 1/4" Compression x 1/2' MNPT Bored Tubing Connector w/ 95 ft BEWT
- L19 - 1/4" Compression x 1/2' MNPT Bored Tubing Connector w/ 100 ft BEWT
- L20 - 1/4" Compression x 1/2' MNPT Bored Tubing Connector w/ 105 ft BEWT
- L21 - 1/4" Compression x 1/2' MNPT Bored Tubing Connector w/ 110 ft BEWT
- L22 - 1/4" Compression x 1/2' MNPT Bored Tubing Connector w/ 115 ft BEWT
- L23 - 1/4" Compression x 1/2' MNPT Bored Tubing Connector w/ 120 ft BEWT
- L24 - 1/4" Compression x 1/2' MNPT Bored Tubing Connector w/ 125 ft BEWT
- L99 - 1/4" Compression x 1/2' MNPT Bored Tubing Connector w/ BEWT Custom Length

Aluminum XP Enclosure

- 00 - None
- 01 - Aluminum XP Head (1/2" FNPT x 3) - Blank - No Window
- 02 - Aluminum XP Head (1/2" FNPT x 3) - w/ 3 1/2 + Digits LCD Loop Powered Display
- 03 - Aluminum XP Head (1/2" FNPT x 3) - w/ 5 Digits LCD Loop Powered Display

Mounting Bracket

- 01 - None
- 02 - 2" Pipe Mounting Kit

Environmental Treatment

- 01 - PTFE Treatment (Sensor / Nose Cone only, not available on 3" Diaphragm Model)
- 02 - No Treatment

Accuracy

- 01 - 0.075 Full Scale
- 02 - 0.25% Full Scale
- 04 - 0.10 %