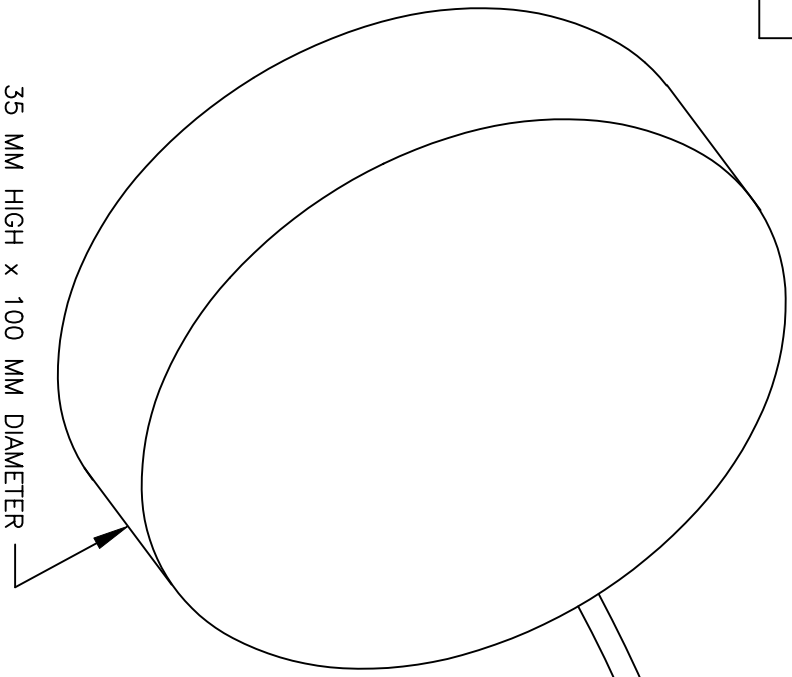


← MOUNTING LOCATION - TANK WALL SHOWN

CONDITION 1:  
LIQUID LEVEL BELOW MOUNTING LOCATION (i.e. "Dry");  
SWITCH STATUS OPEN OR CLOSED (SPDT)  
DEPENDENT UPON WIRING CONFIGURATION

CONDITION 2:  
LIQUID LEVEL AT OR ABOVE MOUNTING  
LOCATION; SWITCH STATUS REVERSED




35 MM HIGH x 100 MM DIAMETER

**SWITCH LOGIC:**

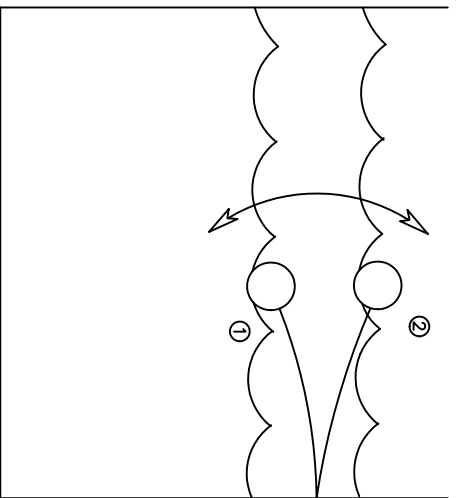
- BLACK: NORMALLY CLOSED (N/C) DRY
- BLUE: NORMALLY OPEN (N/O) DRY
- BROWN: COMMON
- YELLOW/GREEN: EQUIPMENT GROUND

NORMALLY OPEN OR NORMALLY CLOSED LOGIC  
REFERS TO THE SWITCH POSITION WHEN THE  
FLOAT IS NOT IN CONTACT WITH THE PROCESS FLUID (i.e. "Dry")

MODEL: NSM-5101  
MATERIAL: POLYPROPYLENE FLOAT, POLYAMIDE CABLE GLAND, 6' NEOPRENE CABLE  
SPECIFIC GRAVITY: 0.6 MINIMUM  
SWITCH TYPE: SPDT MECHANICAL SWITCH, MAX. 250 VAC/6A, 400 VAC/4A, 100mA MIN.  
MAX. PRESSURE/TEMP: 45 PSIG/140°F

 <b>KOBOLD INSTRUMENTS, INC.</b> 1801 Parkway View Drive Pittsburgh, PA 15205	
MODEL: NSM-5101	DATE: 3/28/11
DESC: SWITCH, FLOAT	REV: 1
SCALE: NTS	DWG: nsmfloat

MODEL: NSM-5101	DATE: 3/28/11
DESC: SWITCH, FLOAT	REV: 1
SCALE: NTS	DWG: nsmfloat

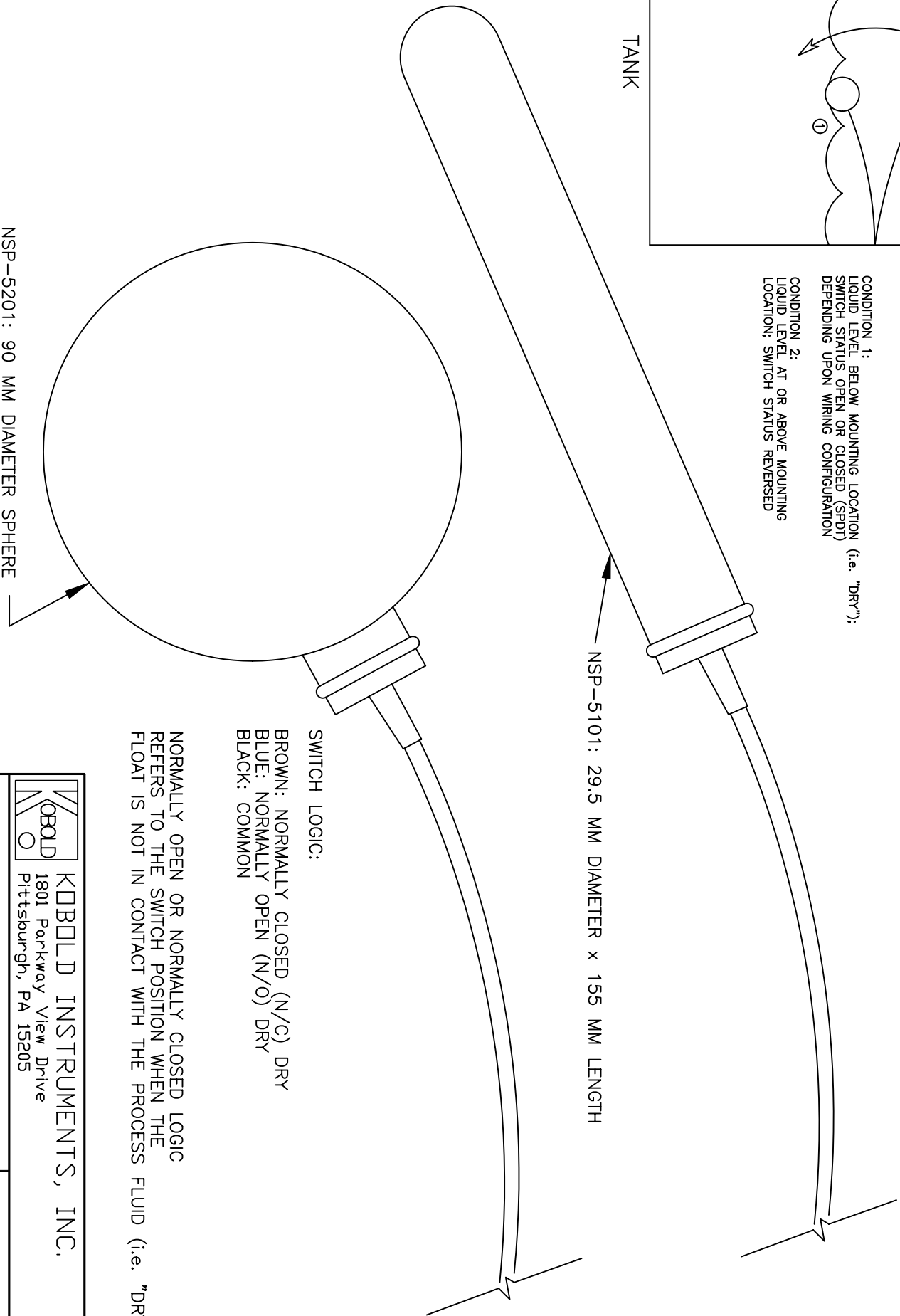


← MOUNTING LOCATION - TANK WALL SHOWN

CONDITION 1:  
LIQUID LEVEL BELOW MOUNTING LOCATION (i.e. "DRY");  
SWITCH STATUS OPEN OR CLOSED (SPDT)  
DEPENDENT UPON WIRING CONFIGURATION

CONDITION 2:  
LIQUID LEVEL AT OR ABOVE MOUNTING  
LOCATION; SWITCH STATUS REVERSED

TANK



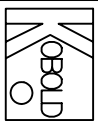
NSP-5201: 90 MM DIAMETER SPHERE

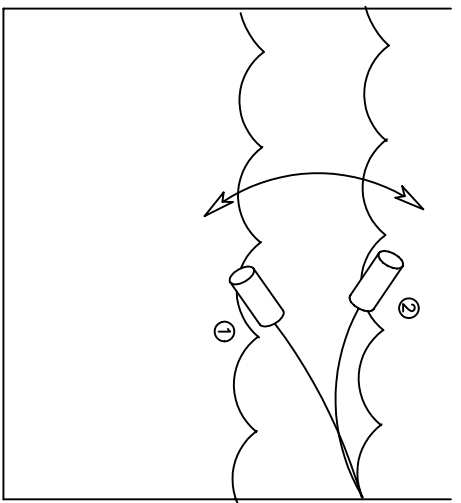
NSP-5101: 29.5 MM DIAMETER x 155 MM LENGTH

SWITCH LOGIC:  
BROWN: NORMALLY CLOSED (N/C) DRY  
BLUE: NORMALLY OPEN (N/O) DRY  
BLACK: COMMON

NORMALLY OPEN OR NORMALLY CLOSED LOGIC  
REFERS TO THE SWITCH POSITION WHEN THE  
FLOAT IS NOT IN CONTACT WITH THE PROCESS FLUID (i.e. "DRY")

MODEL: NSP-5101, NSP-5201  
MATERIAL: POLYPROPYLENE FLOAT, 13' (4M) TPK CABLE  
SPECIFIC GRAVITY: NSP-5101, 0.9 MIN, NSP-5201, 0.6 MIN.  
SWITCH: SPDT MECHANICAL MAX. 250 VAC/150 VDC, 300 VA, 60 W, 1 mA to 1.5 A  
MAX. PRESSURE/TEMP: NSP-5101, 15 PSIG/140°F, NSP-5201, 30 PSIG/140°F

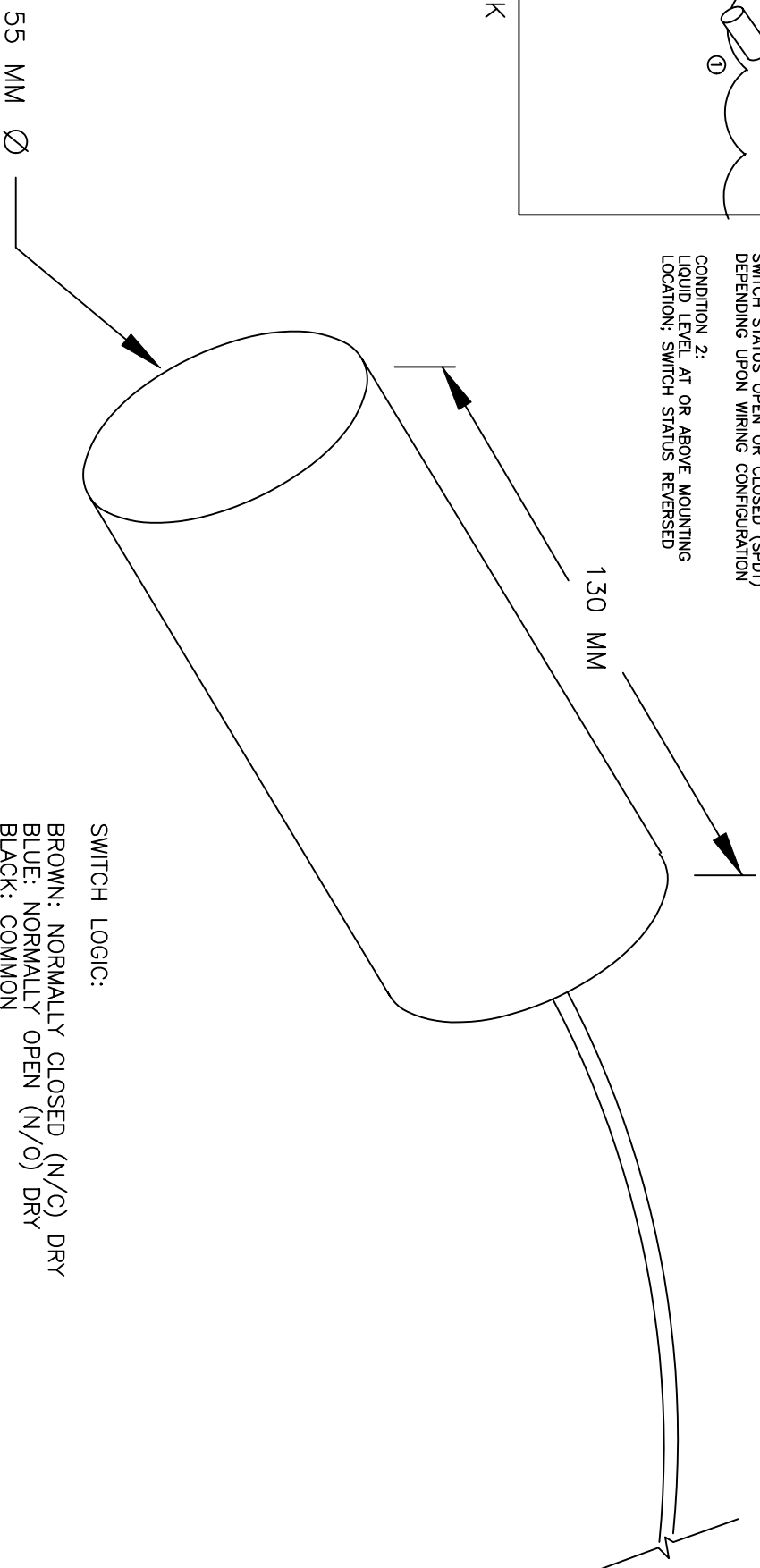
 <b>KOBOLD INSTRUMENTS, INC.</b> 1801 Parkway View Drive Pittsburgh, PA 15205	
MODEL: NSP-5101, NSP-5201	DATE: 3/28/11
DESC: SWITCH, FLOAT	REV: 2
SCALE: NTS	DRAWN: EAS
	DWG: nspflood



— MOUNTING LOCATION — TANK WALL SHOWN

CONDITION 1:  
LIQUID LEVEL BELOW MOUNTING LOCATION (i.e. "DRY");  
SWITCH STATUS OPEN OR CLOSED (SPDT)  
DEPENDENT UPON WIRING CONFIGURATION

CONDITION 2:  
LIQUID LEVEL AT OR ABOVE MOUNTING  
LOCATION; SWITCH STATUS REVERSED



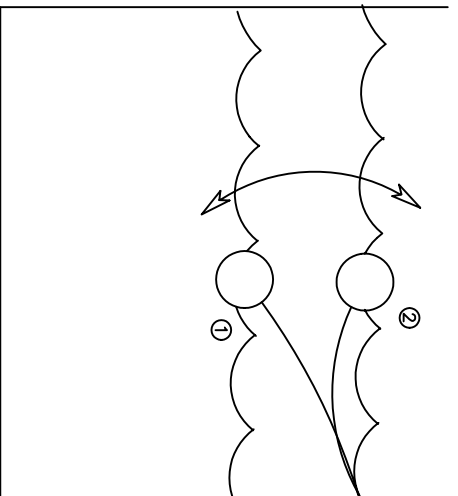
SWITCH LOGIC:  
BROWN: NORMALLY CLOSED (N/C) DRY  
BLUE: NORMALLY OPEN (N/O) DRY  
BLACK: COMMON

NORMALLY OPEN OR NORMALLY CLOSED LOGIC  
REFERS TO THE SWITCH POSITION WHEN THE  
FLOAT IS NOT IN CONTACT WITH THE PROCESS FLUID (i.e. "DRY")

MATERIAL: PTFE FLOAT, 6' FEP CLAD CABLE  
SPECIFIC GRAVITY: 0.79 MIN.  
SWITCH TYPE: MECHANICAL (REED) SPDT SWITCH  
SWITCH RATINGS: 4 to 250 VAC/VDC, 60 VA, 1 mA TO 1 A MAX.  
MAX. PRESSURE/TEMP: 15 PSIG/302°F

**KOBOLD INSTRUMENTS, INC.**  
1801 Parkway View Drive  
Pittsburgh, PA 15205

MODEL: NST-5101	DATE: 3/28/11
DESC: FLOAT SWITCH	REV: 2
SCALE: NTS	DRAWN: EAS
	DWG: nstfloat

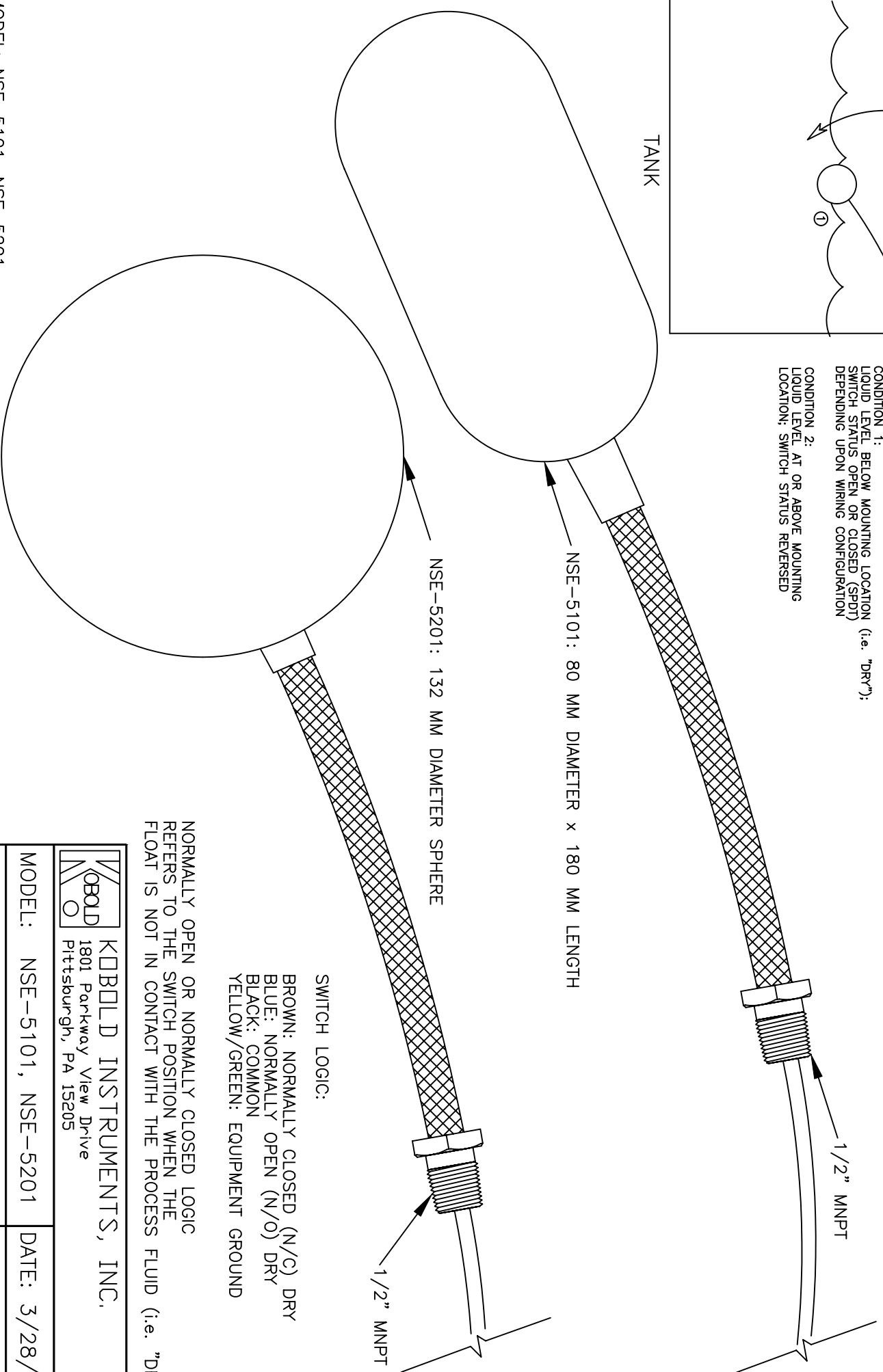


← MOUNTING LOCATION - TANK WALL SHOWN

CONDITION 1:  
LIQUID LEVEL BELOW MOUNTING LOCATION (i.e. "DRY");  
SWITCH STATUS OPEN OR CLOSED (SPDT)  
DEPENDENT UPON WIRING CONFIGURATION

CONDITION 2:  
LIQUID LEVEL AT OR ABOVE MOUNTING  
LOCATION; SWITCH STATUS REVERSED

TANK



NSE-5201: 132 MM DIAMETER SPHERE

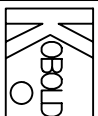
NSE-5101: 80 MM DIAMETER x 180 MM LENGTH

1/2" MNPT

1/2" MNPT

SWITCH LOGIC:  
BROWN: NORMALLY CLOSED (N/C) DRY  
BLUE: NORMALLY OPEN (N/O) DRY  
BLACK: COMMON  
YELLOW/GREEN: EQUIPMENT GROUND

NORMALLY OPEN OR NORMALLY CLOSED LOGIC  
REFERS TO THE SWITCH POSITION WHEN THE  
FLOAT IS NOT IN CONTACT WITH THE PROCESS FLUID (i.e. "DRY")



**KOBOLD INSTRUMENTS, INC.**  
1801 Parkway View Drive  
Pittsburgh, PA 15205

MODEL: NSE-5101, NSE-5201      DATE: 3/28/11

DESC: SWITCH, FLOAT      REV: 2

SCALE: NTS      DRAWN: EAS      DWG: nsefloat

MODEL: NSE-5101, NSE-5201  
MATERIAL: 316-TI SS FLOAT, 6' SILICONE CABLE w/10" SS BRAIDED HOSE  
SPECIFIC GRAVITY: 0.8 MIN.  
SWITCH: MECHANICAL (REED) SPDT RATINGS: 4 to 250 VAC/VDC, 60 VA, 1 mA TO 1A MAX.  
MAX. PRESSURE/TEMP: NSE-5101, 87 PSIG/302°F, NSE-5201, 220 PSIG/302°F