

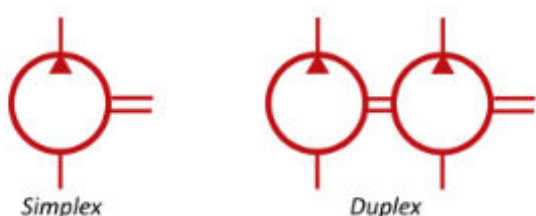
XW WATER/GLYCOL PUMPS



- Rotating swash plate design – 3 or 6 pistons
- Flow/pressure combinations within 15 Kw range – up to 41 l/m or up to 1040 bar continuous
- Pump construction primarily stainless steel with a painted cast steel case
- Duplex operation option
- Vertical or horizontal mounting
- Cool case for continuous operation

The high pressure XW type hydraulic pump is suitable for a wide range of fluids including water-based solutions and oil-based fluids. Separation of the lubricating oil and the pumped fluid is achieved by the installation of a cavity between the cylinder block and the case. Bypass from the pistons is collected in this cavity and returned to the inlet side of the pump.

The pump is available with either three or six pistons. The six piston version can be supplied with duplex deliveries which may be used for simultaneous high and low pressure applications when used with an automatic unloading valve. Additional variations are possible by varying the input speed to a maximum of 1,800rpm.



Various combinations of flows and pressures are possible within the 15 kw range up to a maximum of 1040 bar (15,080 psi) and flow rates up to 41.2 l/m (10.8 USg/m) – see table below.

Installation

Rotation is bi-directional and the pump may be mounted horizontally or vertically.

A suction filter of 150 microns or better should be used. Finer filtration is desirable for the pump life, but is important that the inlet flowrate to the pump is not restricted and no more than -2 in.Hg is measured in the suction pipework under pumping conditions. Where possible a positive pressure should be maintained in the suction pipework under flowing conditions. When the pump is stationary the suction line should be kept under positive pressure to allow priming.

Important - pumps are delivered from Marshalsea with the case lubricating oil drained. Before the pumps are used, the case should be filled with Castrol Alphasyn PG150 to the level specified on the pump technical data sheet

Material

All externally exposed components are manufactured from 316 stainless steel, except the case which is painted cast steel (Norsok M501 paint system is available). Pump shaft is medium carbon steel EN9 or EN8M.

Weight

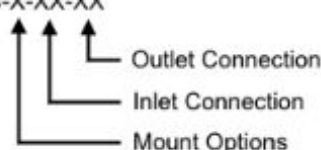
45 Kg

Pump characteristics options

Part Number	Superceeds Type	Maximum pressure rating	Number of pistons	Displacement CC/rev
XW-00-00159-0870-3-5-CC-X-XX-XX	11196-50R1	870 bar	3	1.59
XW-00-00159-1040-3-5-CC-X-XX-XX		1040 bar	3	1.59
XW-00-00208-0870-3-5-CC-X-XX-XX	11196-51R1	870 bar	3	2.08
XW-00-00208-1040-3-5-CC-X-XX-XX		1040 bar	3	2.08
XW-00-00263-0870-3-5-CC-X-XX-XX		870 bar	3	2.63
XW-00-00263-1040-3-5-CC-X-XX-XX		1040 bar	3	2.63
XW-00-00320-0870-3-5-CC-X-XX-XX	11196-60R1	870 bar	3	3.2
XW-00-00320-1040-3-5-CC-X-XX-XX		1040 bar	3	3.2
XW-00-00416-0870-3-6-CC-X-XX-XX	11196-61R1	870 bar	3	4.16
XW-00-00416-1040-3-6-CC-X-XX-XX		1040 bar	3	4.16
XW-00-00480-0870-3-4-CC-X-XX-XX	11196-40R1	870 bar	3	4.8
XW-00-00526-0870-3-6-CC-X-XX-XX		870 bar	3	5.26
XW-00-00825-0870-3-4-CC-X-XX-XX	11196-41R1	870 bar	3	6.25
XW-00-00790-0520-3-4-CC-X-XX-XX	11197-42	520 bar	3	7.9
XW-00-00979-0520-3-4-CC-X-XX-XX	11197-43	520 bar	3	9.79
XW-00-01179-0435-3-4-CC-X-XX-XX	11197-44	435 bar	3	11.79
XW-00-01250-0420-6-4-CC-X-XX-XX		420 bar	6	12.5
XW-00-01580-0330-6-4-CC-X-XX-XX	11202-42	330 bar	6	15.8
XW-00-01958-0260-6-4-CC-X-XX-XX	11202-43	260 bar	6	19.58
XW-00-02358-0220-6-4-CC-X-XX-XX	11202-44	220 bar	6	23.58

Additional Options

XW-00-00159-0870-3-5-CC-X-XX-XX



Mount Options

H - Horizontal mount
V - Vertical mount

Inlet Connection Options

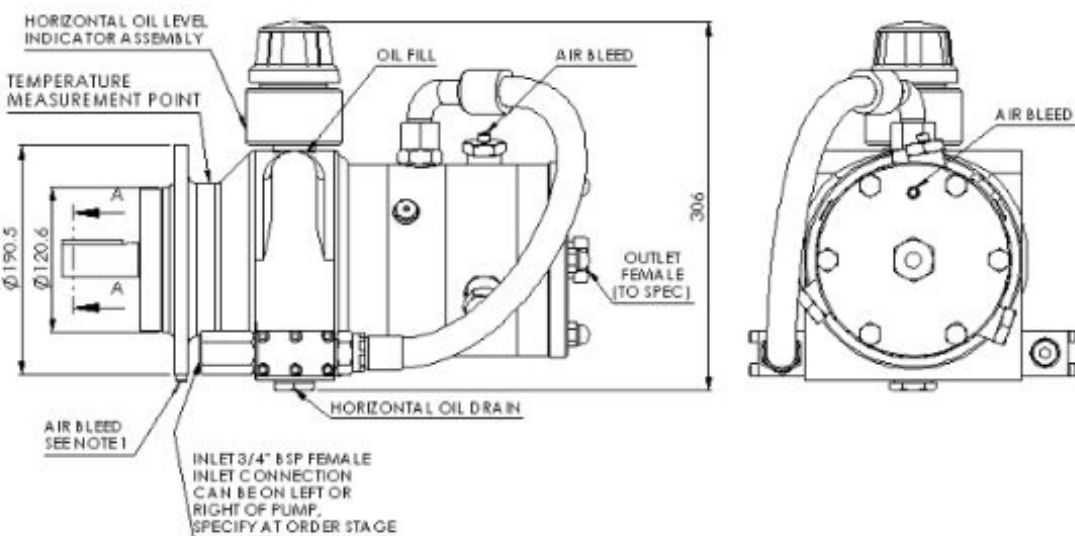
04 - 3/4" BSP Female Inlet
09 - 3/4" NPT Female Inlet
05 - 1" BSP Female Inlet

Outlet Connection Options

03 - 1/2" BSP Female Connection (Pressures up to 520 bar)
08 - 1/2" NPT Female Connection (Pressures up to 870 bar)
11 - 1/4" Medium Pressure Female Connection
12 - 3/8" Medium Pressure Female Connection
13 - 9/16" Medium Pressure Female Connection

Drawing

HORIZONTAL MOUNTING



VERTICAL MOUNTING

