

## Electronic Pressure Switch



measuring  
•  
monitoring  
•  
analyzing

PDD



PDD-15  
PDD-25

PDD-55  
PDD-75

- Measuring Range: -30...0" Hg to 0...5800 PSI or -1...0 bar to 0...400 bar
- Max. Temperature: 176 °F
- Accuracy:  $\pm 0.5\%$  of Full Scale ( $\pm 1.0\%$  of Full Scale for Ranges  $\leq 30$  PSI)
- Housing / Fitting Material: Stainless Steel
- Connection:  $\frac{1}{4}$ " NPT,  $\frac{1}{2}$ " NPT, G  $\frac{1}{4}$ , or G  $\frac{1}{2}$



KOBOLD companies worldwide:

ARGENTINA, AUSTRALIA, AUSTRIA, BELGIUM, BULGARIA, CANADA, CHILE, CHINA, COLOMBIA, CZECH REPUBLIC, EGYPT, FRANCE, GERMANY, HUNGARY, INDIA, INDONESIA, ITALY, MALAYSIA, MEXICO, NETHERLANDS, PERU, POLAND, REPUBLIC OF KOREA, ROMANIA, SINGAPORE, SPAIN, SWITZERLAND, TAIWAN, THAILAND, TUNISIA, TURKEY, UNITED KINGDOM, USA, VIETNAM

KOBOLD Instruments, Inc.  
1801 Parkway View Drive  
Pittsburgh, PA 15205  
Main Office:  
1.800.998.1020  
1.412.788.4890  
info@koboldusa.com  
www.koboldusa.com

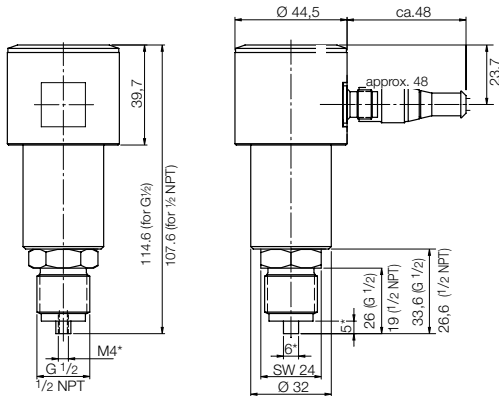


## Electronic Pressure Switch Model PDD

### Description

The KOBOLD pressure switch, model PDD, is a cost effective, electronic pressure switch with digital indication of actual pressure. One or two switch points, on/off-switch delay, and hysteresis are within the programming parameters. A piezoresistive ceramic sensor is used for high cycle life and the sensors can be used where high switching accuracy is needed. Long term stability, repeatability, and a compact robust design makes the PDD an ideal sensor for use in many OEM applications. Common applications include: compressor monitoring, installations, the machinery industry, and pumps.

### Dimensions (mm)



\*No Nipple on NPT Thread  
(1/4" male connection available as option)

### Technical Details

<b>Housing:</b>	303 Stainless Steel
<b>Process Connection:</b>	1/4" or 1/2" NPT 316 L Stainless Steel Option G 1/4 or G 1/2 Male (Others on Request)
<b>Gasket:</b>	FKM (Option: EPDM)
<b>Sensor Element:</b>	Piezoresistive Ceramic Cell
<b>Indication:</b>	3-digit LED, Height 7 mm
<b>Resolution:</b>	Max. 0.2 PSI (Depending on Measuring Range and Measured Value)
<b>Max. Media Temp.:</b>	-4 ... 176 °F
<b>Max. Ambient Temp.:</b>	-4 ... 176 °F
<b>Max. Over Pressure:</b>	Up to 870 PSI: 3x Range From 1450 PSI: 2x Range 5800 PSI: 1.5x Range
<b>Supply Voltage:</b>	24 V <sub>DC</sub> ± 20 %
<b>Power Consumption:</b>	Approx. 100 mA (without Switching Output)
<b>Electrical Connection:</b>	M12x1 Plug
<b>Switching Output:</b>	1x or 2x PNP or NPN Semiconductor, Max. 300 mA, Short-circuit Proof
<b>Contact:</b>	N/O or N/C, Programmable
<b>Switch Point Adj.:</b>	Programmable via 2 Buttons
<b>Output Indicator:</b>	1 LED
<b>Hysteresis:</b>	Adjustable via 2 Buttons
<b>ON/OFF-switch. Delay:</b>	0.5 ... 99.5 s (Separately Adjustable)
<b>Response Time:</b>	0.5 s
<b>Accuracy:</b>	± 0.5 % of f. s. (± 1.0 % of f. s. for Measuring Range: ≤ 30 PSI)
<b>Protection:</b>	IP 65

### Order Details (Example: PDD-15 3 N2 P065)

Model	Output	Electrical Connection	Process Connection	Measuring Range (barG)	Measuring Range (PSIG)
PDD-	..15.. = 1x PNP Switch Output	..3.. = Plug M12x1	..N2.. = 1/4" NPT	..C315 = -1...0	..H315 = -30...0 in Hg
	..25.. = 1x NPN Switch Output		..N4.. = 1/2" NPT	..B025 = 0...1	..P025 = 0...15
	..55.. = 2x PNP Switch Outputs		..R2.. = G 1/4	..B035 = 0...1.6	..P045 = 0...30
	..75.. = 2x NPN Switch Outputs		..R4.. = G 1/2	..B045 = 0...2.5	..P055 = 0...50
				..B055 = 0...4	..P065 = 0...100
				..B065 = 0...6	..P075 = 0...150
				..B075 = 0...10	..P085 = 0...200
				..B085 = 0...16	..P095 = 0...350
				..A095 = 0...25	..P105 = 0...600
				..A105 = 0...40	..P115 = 0...1000
				..A115 = 0...60	..P125 = 0...1450
				..A125 = 0...100	..P135 = 0...2300
				..A135 = 0...160	..P145 = 0...3600
				..A145 = 0...250	..P155 = 0...5800
				..A155 = 0...400	..E = Custom*

### Accessory: Mating Electrical Cable

\*Please specify custom range as a note on your order

Description	Item #
M12 Micro-DC, 4-pin 6 foot Cable	807.037
M12 Micro-DC, 4-pin 16 foot Cable	807.037/5M