

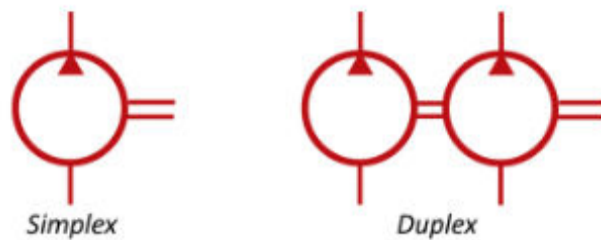
XH Oil Pump



- Compact rotating swash plate design
- Pressures up to 690 bar
- Flows up to 139.3 l/m (36.8 USg/m)
- 316 stainless and carbon steel case options
- Flow/pressure combinations within 50 kw range
- Duplex operation option

The high pressure 50kW type XH hydraulic pump incorporates 3 or 6 axial pistons actuated by a single rotating swash plate.

The pump can also be supplied with duplex deliveries which may be used for simultaneous high and low pressure applications when used in conjunction with an automatic unloading valve. Other output combinations are available.



Various combinations of flows and pressures are possible up to a maximum of 690 bar or up to 139.3 litres/min – see table below.

Installation

Rotation is bi-directional and the pump may be mounted horizontally or vertically.

A suction filter of 150 microns or better should be used. Finer filtration is desirable for the pump life, but is important that the inlet flowrate to the pump is not restricted and no more than -2 in.Hg is measured in the suction pipework under pumping conditions. Where possible a positive pressure should be maintained in the suction pipework under flowing conditions. When the pump is stationary the suction line should be kept under positive pressure to allow priming.

Fluids

These pumps are designed to run on mineral oils with an operating viscosity between 15 and 100 cst. Consult the factory for viscosities outside this range.

Temperature

The operating temperature range is -20°C; to +60°C (Ambient).

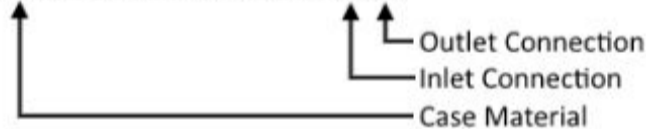
Weight

200 Kg

Part Number	Cylinders	Flow	Flow @ 1450 RPM		Flow @ 1750 RPM		Pressure bar
		cc/rev	l/m	Usg/m	l/m	Usg/m	
XHR1-00-00951-0690-3-4-NC-VH-XX-XX	3	9.51	13.78	3.639	16.63	4.391	690
XHR1-00-01151-0690-3-4-NC-VH-XX-XX	3	11.51	16.69	4.407	20.15	5.319	690
XHR1-00-01368-0690-3-4-NC-VH-XX-XX	3	13.68	19.83	5.236	23.93	6.319	690
XHR1-00-01607-0690-3-4-NC-VH-XX-XX	3	16.07	23.3	6.15	28.12	7.423	690
XHR1-00-01861-0690-3-4-NC-VH-XX-XX	3	18.61	26.98	7.122	32.56	8.596	690
XHR1-00-01900-0690-3-4-NC-VH-XX-XX	3	19	27.55	7.274	33.26	8.779	690
XHR1-00-02140-0690-3-4-NC-VH-XX-XX	3	21.4	31.03	8.191	37.45	9.886	690
XHR1-00-02429-0690-3-4-NC-VH-XX-XX	3	24.29	35.22	9.298	42.51	11.222	690
XHR1-00-02744-0620-3-4-NC-VH-XX-XX	3	27.44	39.79	10.505	48.02	12.678	620
XHR1-00-03073-0555-3-4-NC-VH-XX-XX	3	30.73	44.56	11.764	53.78	14.198	555
XHR1-00-03427-0500-3-4-NC-VH-XX-XX	3	34.27	49.68	13.117	59.96	15.831	500
XHR1-00-03844-0445-3-4-NC-VH-XX-XX	3	38.44	55.74	14.714	67.27	17.758	445
XHR1-00-01901-0690-6-4-NC-VH-XX-XX	6	19.01	27.57	7.277	33.27	8.783	690
XHR1-00-02303-0690-6-4-NC-VH-XX-XX	6	23.03	33.39	8.815	40.3	10.638	690
XHR1-00-02735-0625-6-4-NC-VH-XX-XX	6	27.35	39.66	10.471	47.87	12.637	625
XHR1-00-03213-0530-6-4-NC-VH-XX-XX	6	32.13	46.59	12.3	56.23	14.845	530
XHR1-00-03721-0460-6-4-NC-VH-XX-XX	6	37.21	53.95	14.244	65.12	17.191	460
XHR1-00-03801-0450-6-4-NC-VH-XX-XX	6	38.01	55.11	14.549	66.51	17.559	450
XHR1-00-04280-0400-6-4-NC-VH-XX-XX	6	42.8	62.06	16.383	74.89	19.772	400
XHR1-00-04858-0350-6-4-NC-VH-XX-XX	6	48.58	70.44	18.597	85.02	22.444	350
XHR1-00-05488-0310-6-4-NC-VH-XX-XX	6	54.88	79.58	21.01	96.05	25.357	310
XHR1-00-06146-0275-6-4-NC-VH-XX-XX	6	61.46	89.12	23.528	107.56	28.396	275
XHR1-00-06853-0250-6-4-NC-VH-XX-XX	6	68.53	99.37	26.234	119.93	31.661	250
XHR1-00-07688-0220-6-4-NC-VH-XX-XX	6	76.88	111.47	29.428	134.53	35.517	220

Additional Options

XHR1-xx-07962-0215-6-4-NC-VH-xx-xx



Case Material

- 00 - Stainless Steel Construction
- 01 - Carbon Steel Construction

Inlet Connection Options

- 14 - 2" BSP Female Inlet

Outlet Connection Options

- 05 - 1" BSP Female Outlet (Pressure up to 420 bar)
- 15 - 1" MP Female Outlet

Dimensions

