



www.hy-lok.com

Catalog No. H-250CF
Feb. 2022



Clean Fittings

for Tube Weld & Metal Gasket Face Seal



- 1/4 to 1 inch and 6 to 18mm size
- 316L VOD and 316L VIM VAR Stainless steel material
- Weld Fitting for manual or Automatic welding equipment

HY-LOK CORPORATION

© 1998-2004, 2011, 2021, 2022 HY-LOK CORPORATION All rights reserved



Tube Weld Fittings

Mini Tube Butt Weld Fittings

Mini Elbow H-MLA		06
Mini Tee H-MTA		06
Mini Cross H-MXA		06
Mini Reducing Elbow H-MLA		07
Mini Reducing Tee H-MTA		07
Mini Reducing Coupling H-MCA		07

Automatic Tube Butt Weld Fittings

Long Elbow with Shoulder H-ML-A		10
Long Tee with Shoulder H-MT-A		10
Long Cross with Shoulder H-MX-A		10
Long Reducing Tee with Shoulder H-MT-A		11
Union with Shoulder H-MU-A		11
Reducing Union with Shoulder H-MU-A		11

Tube Butt Weld Fittings















Long Elbow H-ML		08
Long Tee H-MT		08
Long Cross H-MX		08
Long Reducing Tee H-MT		09
Reducing Union H-MU		09

Metal Gasket Face Seal Fittings








Glands

Short Tube Butt Weld Gland H-ZSG		13
Long Tube Butt Weld Gland H-ZLG		13
Mini Short Tube Butt Weld Gland H-ZMSG		13
Mini Long Tube Weld Gland H-ZMLG		14
Short Tube Weld Gland with Shoulder H-ZSG-A		14
Long Tube Weld Gland with Shoulder H-ZLG-A		14
Mini Short Tube Weld Gland with Shoulder H-ZMSG-A		15
Male Weld Gland H-ZGM		15
Socket Weld Gland H-ZGS		15
Reducing Socket Weld Gland H-ZGS		15
Short Socket Weld Gland H-ZGS		16
Tube Adapter Gland H-ZGT		16
Blind Gland H-ZBG		16
Coupling H-ZC		16

Union, Elbow, Tee, Connectors

Double Male Union H-ZUA		17
Union Elbow H-ZLA		17
Union Tee H-ZTA		17
Union Cross H-ZXA		17
Double Male Reducing Union H-ZUR		18
Bulkhead Union H-ZBHU		18
Hy-Lok Tube Fitting Connector H-ZHC		18
Hy-Lok Tube Fitting Bulkhead Connector H-ZBHC		19
Male NPT Connector H-ZMC		19
Male NPT Elbow H-ZLMA		19
Straight thread O-Ring Seal Male Connector H-ZSC		20
Female NPT Connector H-ZFC		20
Bulkhead Male Connector H-ZBMC		20
Tube Butt Weld Bulkhead Connector H-ZBT		21

Swivel Union, Elbow, Tee, Connectors

Swivel Male/Female Union H-ZSMU		21
Swivel Female Union H-ZSUA		21
Swivel Male NPT Connector H-ZSMC		21
Swivel Female NPT Connector H-ZSFC		22
Swivel Hy-Lok Tube Fitting Connector H-ZSMH		22
Swivel Elbow H-ZSLA		22
Swivel Tee H-ZSTA		22

Nut, Cap, Plug & Gasket

Female Nut H-ZFN		23
Male Nut H-ZMN		23
Cap H-ZCP		23
Plug H-ZP		23
Gasket H-ZGSK		24
Gasket Retainer Assembly H-ZGRT		24

High-Flow Connections

High Flow Tube Butt Weld Gland H-ZHG		25
High Flow Tube Butt Weld Reducer H-ZR		25
High Flow Tube Weld Reducer with Shoulder H-ZR-A		25
High Flow Tube Butt Weld Bulkhead Connector H-ZHBT		25
High Flow Union Elbow H-ZHLA		26
High Flow Union Tee H-ZHTA		26
High Flow Female Nut H-ZHFN		26
High Flow Male Nut H-ZHMN		26

Pressure Ratings

The Hy-Lok clean weld fittings and metal gasket face seal fittings are manufactured from material in accordance with material table, and calculated in accordance with ASME code for Pressure Piping B 31.3, Process Piping for allowable stress value of 20,000 psi (equivalent ASTM A269-tubing) wall thickness.

Pressure ratings for fittings are also determined by temperature applied to the fittings.

Allowable working pressure at temperatures greater than 100°F (37°C) may be obtained by multiplying factors shown in Table 1

To determine pressure ratings in accordance with ASME B31.1, Power Piping, multiply working pressure by 0.94

Table 1. Derating Factors

Temperature °F (°C)	Factor	
	316 Stainless Steel	316L Stainless Steel
-20 to 100 (-28 to 37)	1.00	0.83
200 (93)	1.00	0.83
300 (148)	1.00	0.83
400 (204)	0.96	0.77
500 (260)	0.89	0.72
600 (315)	0.85	0.67
650 (343)	0.83	0.66
700 (371)	0.81	0.64
750 (398)	0.80	0.63
800 (426)	0.79	0.62
850 (454)	0.78	0.60
900 (482)	0.77	-
950 (510)	0.77	-
1000 (537)	0.76	-

Temperature Rating

Type	Material	Temperature, °F (°C)
Fittings	Single Vacuum Melt 316L Stainless Steel	1000 (537)
	Double Vacuum Melt 316L Stainless Steel	
Gaskets	316L Stainless Steel	1000 (537)
	Nickel	600 (315)
	Copper	400 (204)

Material

Material	Designator	Specification	
		Bar Stock	Forging
Single Vacuum Melt 316L Stainless Steel	SM6L	ASME SA479 ASTM A479	ASME SA182 ASTM A182
Double Vacuum Melt 316L Stainless Steel	VV6L	ASTM A276	

Surface Finishes

Grade	Designator	Roughness Average Ra	EP	Material	Packing Standard Class 10
B.A.	B	0.25 μm (10 μin)	N/A	S316, 316L or SM6L	Double
High	H	0.13 μm (5 μin)	Yes	SM6L or VV6L	Double

Cleaning

Passivation is done in a Nitric environment.

Precision cleaning is done by Ultra-sonic cleansing with resistivity over 18MΩ D.I. water after finishing the passivation.

Packing & Handling

Hy-Lok clean fittings are double packed in anti-static polyethylene bags pressurized with high purity nitrogen gas.

Care should be used to maintain cleanliness.

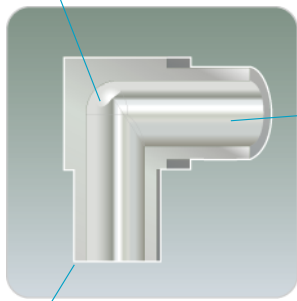
Packing done in a clean room of Class 10 needs additional packing.

- A. To maintain and transport in standard-pack condition.
- B. Remove particles from outer package, open the cardboard or outer package before carrying into clean room.
- C. To move in double pack condition in clean room, take off the 1st package when used.
- D. Remove the 2nd package just before welding.

Mini Tube Butt Weld Fittings

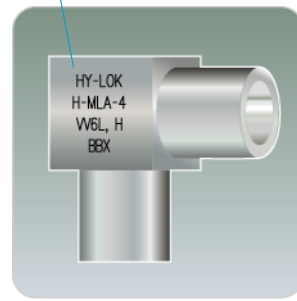
- is suitable for the miniature tubing system.
- is available to install the parts closetogether.
- has the equivalent flow capacity with bigger sized weld fitting.
- Maximum working temperature is 100°F (37°C)

Radius junction means smooth flow transitions and elimination of pockets and entrapment zones.



Typical surface finish is average Ra 0.25 μm (Ra 10 μin)

Laser etch Marking Heat Code Traceability
HY-LOK Clean fittings are marked with Manufacturer, Part No., Material, Surface Finish, Heat Code No. designation.

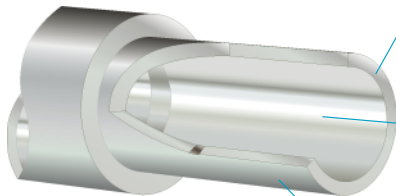


Square, sharp, burr-free tube weld end.

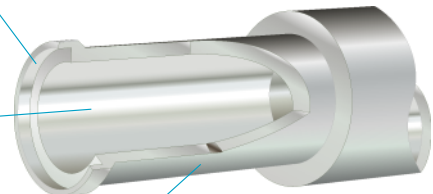
TBW (Tube Butt Weld) and ATW (Automatic Tube Butt Weld) Fittings

- HY-LOK Clean fittings are applicable for two welding shapes. TBW (Tube Butt Weld) and ATW (Automatic Tube Butt Weld)
- TBW is machined for optimal Butt Welding by Automatic TIG welder.

Tube ends are machined with a square face and corners to enhance alignment and maintain tube wall uniformity.

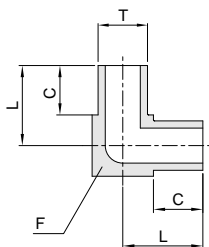


Typical surface finish is average Ra 0.25 μm (Ra 10 μin)



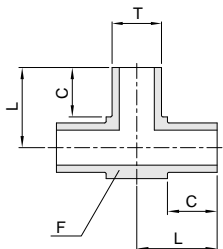
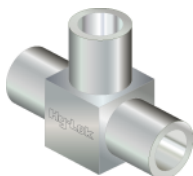
Precisely finished diameter matches tube diameter.

Mini Elbow
H-MLA



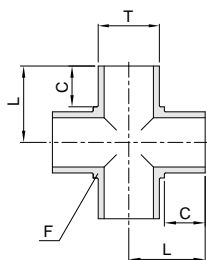
Part No.	T Tube O.D.	Wall Thickness	L		C		F Body Cube	Working Pressure	
			mm	in.	mm	in.		psig	bar
H-MLA- 4	1/4	0.035 in.	10.4	0.41	6.35	0.25	5/16	5100	351
H-MLA- 6	3/8		11.9	0.47			7/16	3300	227
H-MLA- 8	1/2	0.049 in.	13.5	0.53			9/16	3700	254
H-MLA-12	3/4	0.065 in.	16.68	0.66			13/16	3300	227
H-MLA- 6M	6mm	1.0 mm	10.4	0.41			5/16	6095	420
H-MLA- 8M	8mm		11.9	0.47			7/16	4499	310
H-MLA-10M	10mm		13.5	0.53			9/16	3483	240
H-MLA-12M	12mm		13.5	0.53				9/16	2902

Mini Tee
H-MTA



Part No.	T Tube O.D.	Wall Thickness	L		C		F Body Cube	Working Pressure	
			mm	in.	mm	in.		psig	bar
H-MTA- 4	1/4	0.035 in.	10.4	0.41	6.35	0.25	5/16	5100	351
H-MTA- 6	3/8		11.9	0.47			7/16	3300	227
H-MTA- 8	1/2	0.049 in.	13.5	0.53			9/16	3700	254
H-MTA-12	3/4	0.065 in.	16.68	0.66			13/16	3300	227
H-MTA- 6M	6mm	1.0 mm	10.4	0.41			5/16	6095	420
H-MTA- 8M	8mm		11.9	0.47			7/16	4499	310
H-MTA-10M	10mm		13.5	0.53			9/16	3483	240
H-MTA-12M	12mm		13.5	0.53				9/16	2902

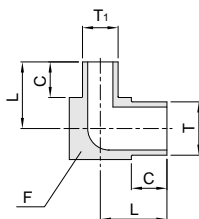
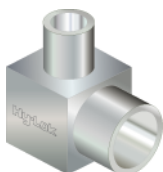
Mini Cross
H-MXA



Part No.	T Tube O.D.	Wall Thickness	L		C		F Body Cube	Working Pressure	
			mm	in.	mm	in.		psig	bar
H-MXA- 4	1/4	0.035 in.	10.4	0.41	6.35	0.25	5/16	5100	351
H-MXA- 6	3/8		11.9	0.47			7/16	3300	227
H-MXA- 8	1/2	0.049 in.	13.5	0.53			9/16	3700	254
H-MXA-12	3/4	0.065 in.	16.68	0.66			13/16	3300	227
H-MXA- 6M	6mm	1.0 mm	10.4	0.41			5/16	6095	420
H-MXA- 8M	8mm		11.9	0.47			7/16	4499	310
H-MXA-10M	10mm		13.5	0.53			9/16	3483	240
H-MXA-12M	12mm		13.5	0.53				9/16	2902

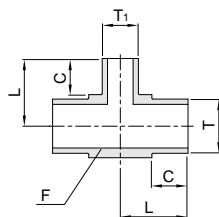
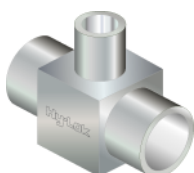
Dimensions are reference only, subject to change.

Mini Reducing Elbow
H-MLA



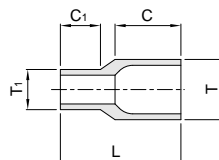
Part No.	T Tube O.D.	Wall Thickness	T ₁ Tube O.D.	Wall Thickness	L		C		F Body Cube	Working Pressure	
					mm	in.	mm	in.		psig	bar
H-MLA 6-4	3/8	0.035 in.	1/4	0.035 in.	11.9	0.47	6.35	0.25	7/16	3300	227
H-MLA 8-4	1/2	0.049 in.			13.5	0.53				9/16	3300
H-MLA 8-6			3/8	16.68	0.66	13/16	3300	227			
H-MLA12-4	1/4	0.049 in.	7/16						4499	310	
H-MLA12-6	3/4			3/8	13/16	2902	200				
H-MLA12-8	1/2	1/2	9/16	3483				240			
H-MLA 8M-6M	8mm	1.0 mm			6mm	1.0 mm	11.9		0.47	7/16	4499
H-MLA10M-6M	10mm		12mm	8mm				13.5			
H-MLA12M-6M	12mm	8mm			13.5	0.53	9/16		2902	200	
H-MLA12M-8M	12mm		8mm	13.5				0.53			9/16

Mini Reducing Tee
H-MTA



Part No.	T Tube O.D.	Wall Thickness	T ₁ Tube O.D.	Wall Thickness	L		C		F Body Cube	Working Pressure	
					mm	in.	mm	in.		psig	bar
H-MTA 6-4	3/8	0.035 in.	1/4	0.035 in.	11.9	0.47	6.35	0.25	7/16	3300	227
H-MTA 8-4	1/2	0.049 in.			13.5	0.53				9/16	3300
H-MTA 8-6			3/8	16.68	0.66	13/16	3300	227			
H-MTA12-4	1/4	0.049 in.	7/16						4499	310	
H-MTA12-6	3/4			3/8	13/16	2902	200				
H-MTA12-8	1/2	1/2	9/16	3483				240			
H-MTA 8M-6M	8mm	1.0 mm			6mm	1.0 mm	11.9		0.47	7/16	4499
H-MTA10M-6M	10mm		12mm	8mm				13.5			
H-MTA12M-6M	12mm	8mm			13.5	0.53	9/16		2902	200	
H-MTA12M-8M	12mm		8mm	13.5				0.53			9/16

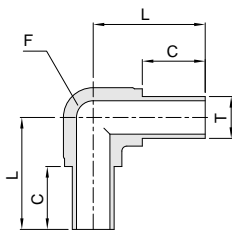
Mini Reducing Coupling
H-MCA



Part No.	T Tube O.D.	Wall Thickness	T ₁ Tube O.D.	Wall Thickness	L		C		C ₁	Working Pressure		
					mm	in.	mm	in.		mm	in.	psig
H-MCA 6-4	3/8	0.035 in.	1/4	0.035 in.	19.05	0.75	10.41	0.41	6.35	0.25	3300	227
H-MCA 8-4	1/2	0.049 in.									3700	254
H-MCA 8-6			3/8	16.68	0.66	13/16	3300	227				
H-MCA12-4	1/4	0.049 in.	7/16						4499	310		
H-MCA12-6	3/4			3/8	13/16	2902	200					
H-MCA12-8	1/2	1/2	9/16	3483				240				
H-MCA 8M- 6M	8mm	1.0 mm			6mm	1.0 mm	11.9		0.47	7/16	4499	310
H-MCA10M- 8M	10mm		12mm	8mm				13.5				
H-MCA12M- 8M	12mm	8mm			13.5	0.53	9/16		2902	200		
H-MCA12M-10M	12mm		10mm	13.5				0.53			9/16	2902

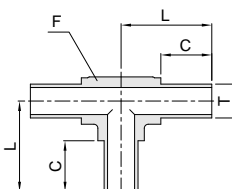
Dimensions are reference only, subject to change.

Long Elbow
H-ML



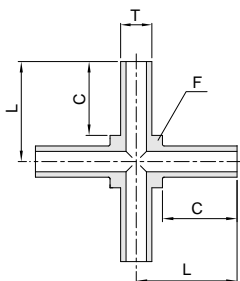
Part No.	T Tube O.D.	Wall Thickness	L		C		F Body Flat	Working Pressure	
			mm	in.	mm	in.		psig	bar
H-ML- 4	1/4	0.035 in.	25.0	0.98	19.05	0.75	7/16	5100	351
H-ML- 6	3/8							3300	227
H-ML- 8	1/2	0.049 in.	29.0	1.14	19.05	0.75	11/16	3700	254
H-ML-12	3/4							2400	165
H-ML-16	1	0.065 in.	38.3	1.51	24.40	0.96	1 1/4	2400	165
H-ML- 6M	6mm	1.0 mm	25.0	0.98	19.05	0.75	7/16	6095	420
H-ML- 8M	8mm							4499	310
H-ML-10M	10mm		29.0	1.14			11/16	3483	240
H-ML-12M	12mm							2902	200
H-ML-18M	18mm	1.5 mm	33.5	1.32			15/16		

Long Tee
H-MT



Part No.	T Tube O.D.	Wall Thickness	L		C		F Body Flat	Working Pressure	
			mm	in.	mm	in.		psig	bar
H-MT- 4	1/4	0.035 in.	25.0	0.98	19.05	0.75	7/16	5100	351
H-MT- 6	3/8							3300	227
H-MT- 8	1/2	0.049 in.	29.0	1.14	19.05	0.75	11/16	3700	254
H-MT-12	3/4							2400	165
H-MT-16	1	0.065 in.	38.3	1.51	24.40	0.96	1 1/4	2400	165
H-MT- 6M	6mm	1.0 mm	25.0	0.98	19.05	0.75	7/16	6095	420
H-MT- 8M	8mm							4499	310
H-MT-10M	10mm		29.0	1.14			11/16	3483	240
H-MT-12M	12mm							2902	200
H-MT-18M	18mm	1.5 mm	33.5	1.32			15/16		

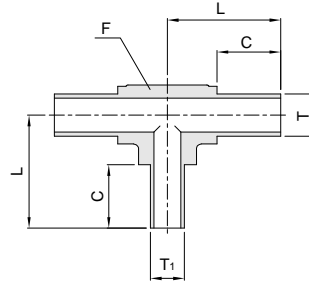
Long Cross
H-MX



Part No.	T Tube O.D.	Wall Thickness	L		C		F Body Flat	Working Pressure	
			mm	in.	mm	in.		psig	bar
H-MX- 4	1/4	0.035 in.	25.0	0.98	19.05	0.75	7/16	5100	351
H-MX- 6	3/8							3300	227
H-MX- 8	1/2	0.049 in.	29.0	1.14	19.05	0.75	11/16	3700	254
H-MX- 6M	6mm	1.0 mm	25.0	0.98				7/16	6095
H-MX- 8M	8mm				4499	310			
H-MX-10M	10mm		29.0	1.14	5/8	3483	240		
H-MX-12M	12mm					2902	200		

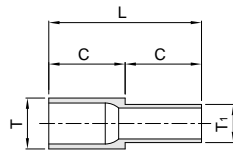
Dimensions are reference only, subject to change.

Long Reducing Tee H-MT



Part No.	T Tube O.D.	Wall Thickness	T ₁ Tube O.D.	Wall Thickness	L		C		F Body Flat	Working Pressure		
					mm	in.	mm	in.		in.	psig	bar
H-MT 6-4	3/8	0.035 in.	1/4	0.035 in.	25.0	0.98	19.05	0.75	7/16	3300	227	
H-MT 8-4	1/2	0.049 in.			29.0	1.14				11/16	3700	254
H-MT 8-6			3/4		33.5	1.32			15/16		3300	227
H-MT12-6	1/4				25.0	0.98				7/16	2400	165
H-MT12-4											3483	240
H-MT 8M-6M	8mm		1.0 mm	6mm	1.0 mm	29.0	1.14	19.05	0.75	11/16	4499	310
H-MT10M-6M	10mm	8mm		29.0		1.14	7/16				3483	240
H-MT10M-8M		12mm								6mm	29.0	1.14
H-MT12M-6M	8mm											
H-MT12M-8M	8mm											

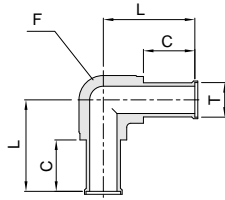
Reducing Union H-MU



Part No.	T Tube O.D.	Wall Thickness	T ₁ Tube O.D.	Wall Thickness	L		C		Working Pressure								
					mm	in.	mm	in.	psig	bar							
H-MU 6- 4	3/8	0.035 in.	1/4	0.035 in.	38.1	1.50	19.05	0.75	3300	227							
H-MU 8- 4	1/2	0.049 in.							3700	254							
H-MU 8- 6			3/8						3300	227							
H-MU12- 8	3/4		1/2						2400	165							
H-MU16- 8	1	0.065 in.	3/4						10mm	1.0 mm	38.1	1.50	19.05	0.75	3483	240	
H-MU16-12			10mm	6mm													
H-MU10M- 6M	8mm	1.0 mm	1.0 mm	10mm	1.0 mm	38.1	1.50	19.05							0.75	2902	200
H-MU10M- 8M																	
H-MU12M- 6M	6mm																
H-MU12M- 8M	8mm																
H-MU12M-10M	10mm																
H-MU18M- 6M	18mm	1.5 mm	6mm	1.5 mm	18mm	1.5 mm	1.5 mm	18mm	1.5 mm	2902	200						
H-MU18M-12M			12mm														

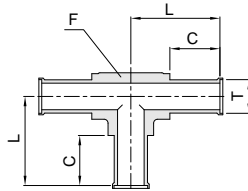
Dimensions are reference only, subject to change.

Long Elbow with Shoulder
H-ML-A



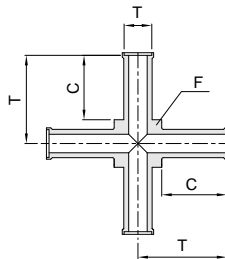
Part No.	T Tube O.D.	Wall Thickness	L		C		F Body Flat	Working Pressure		
			mm	in.	mm	in.		psig	bar	
H-ML- 4A	1/4	0.035 in.	25.0	0.98	19.05	0.75	7/16	5100	351	
H-ML- 6A	3/8		33.0	1.32				3300	227	
H-ML- 8A	1/2	0.049 in.	2.90	1.14	19.05	0.75	11/16	3700	254	
H-ML-12A	3/4		33.5	1.32				15/16	2400	165
H-ML-16A	1	0.065 in.	38.3	1.51	24.40	0.96	1 1/4	2400	165	
H-ML- 6MA	6mm	1.0 mm	25.0	0.98	19.05	0.75	7/16	6095	420	
H-ML- 8MA	8mm		33.0	1.32				4499	310	
H-ML-10MA	10mm		29.0	1.14				11/16	3483	240
H-ML-12MA	12mm		33.5	1.32				15/16	2902	200
H-ML-18MA	18mm	1.5 mm	33.5	1.32			15/16			

Long Tee with Shoulder
H-MT-A



Part No.	T Tube O.D.	Wall Thickness	L		C		F Body Flat	Working Pressure		
			mm	in.	mm	in.		psig	bar	
H-MT- 4A	1/4	0.035 in.	25.0	0.98	19.05	0.75	7/16	5100	351	
H-MT- 6A	3/8		33.0	1.32				3300	227	
H-MT- 8A	1/2	0.049 in.	2.90	1.14	19.05	0.75	11/16	3700	254	
H-MT-12A	3/4		33.5	1.32				15/16	2400	165
H-MT-16A	1	0.065 in.	38.3	1.51	24.40	0.96	1 1/4	2400	165	
H-MT- 6MA	6mm	1.0 mm	25.0	0.98	19.05	0.75	7/16	6095	420	
H-MT- 8MA	8mm		33.0	1.32				4499	310	
H-MT-10MA	10mm		29.0	1.14				11/16	3483	240
H-MT-12MA	12mm		33.5	1.32				15/16	2902	200
H-MT-18MA	18mm	1.5 mm	33.5	1.32			15/16			

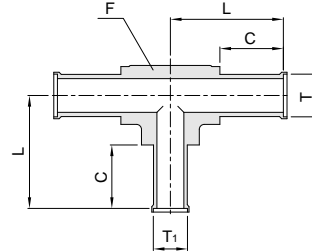
Long Cross with Shoulder
H-MX-A



Part No.	T Tube O.D.	Wall Thickness	L		C		F Body Flat	Working Pressure		
			mm	in.	mm	in.		psig	bar	
H-MX- 4A	1/4	0.035 in.	25.0	0.98	19.05	0.75	7/16	5100	351	
H-MX- 6A	3/8		33.0	1.32				3300	227	
H-MX- 8A	1/2	0.049 in.	29.0	1.14	19.05	0.75	7/16	3700	254	
H-MX- 6MA	6mm	1.0 mm	25.0	0.98				19.05	0.75	7/16
H-MX- 8MA	8mm		33.0	1.32	4499	310				
H-MX-10MA	10mm		29.0	1.14	5/8	3483	240			
H-MX-12MA	12mm		33.5	1.32	15/16	2902	200			

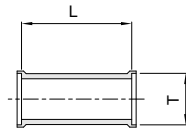
Dimensions are reference only, subject to change.

Long Reducing Tee with Shoulder
H-MT-A



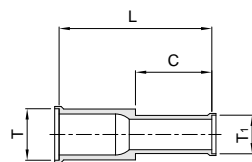
Part No.	T Tube O.D.	Wall Thickness	T ₁ Tube O.D.	Wall Thickness	L		C		F Body Flat	Working Pressure	
					mm	in.	mm	in.		in.	psig
H-MT 6- 4A	3/8	0.035 in.	1/4	0.035 in.	25.0	0.98	19.05	0.75	7/16	3300	227
H-MT 8- 4A	1/2	0.049 in.			29.0	1.14			11/16	3700	254
H-MT 8- 6A			3/8	0.049 in.	33.5	1.32	15/16	2400	165		
H-MT12- 6A	3/4	1.0 mm	1/2	0.049 in.	29.0	1.14	19.05	0.75	11/16	200	227
H-MT12- 8A	12mm		6mm	1.0 mm					29.0	1.14	11/16

Union with Shoulder
H-MU-A



Part No.	T Tube O.D.	Wall Thickness	L		Working Pressure	
			mm	in.	psig	bar
H-MU- 4A	1/4	0.035 in.	24.4	0.96	5100	351
H-MU- 6A	3/8		23.8	0.94	3300	227
H-MU- 8A	1/2	0.049 in.	23.4	0.92	3700	254
H-MU-12A	3/4				2400	165
H-MU-16A	1	0.065 in.	29.8	1.17	6095	420
H-MU- 6MA	6mm	1.0 mm	30.8	1.21		
H-MU- 8MA	8mm		30.2	1.19	3483	240
H-MU-10MA	10mm		29.8	1.17	2902	200
H-MU-12MA	12mm					
H-MU-18MA	18mm	1.5 mm				

Reducing Union with Shoulder
H-MU-A

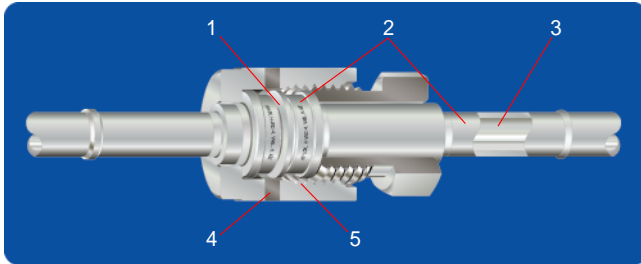


Part No.	T Tube O.D.	Wall Thickness	T ₁ Tube O.D.	Wall Thickness	L		C		Working Pressure				
					mm	in.	mm	in.	psig	bar			
H-MU 6-4A	3/8	0.035 in.	1 / 4	0.035 in.	38.8	1.53	18.6	0.73	3300	227			
H-MU 8-4A	1/2	0.049 in.			38.6	1.52			3700	254			
H-MU 8-6A			3 / 8	38.3	1.51	18.3	0.72	3300	227				
H-MU 8M-6MA	8mm	1.0 mm	6mm	1.0 mm	38.6	1.52	18.6	0.73	4499	310			
H-MU12M-6MA	12mm								8mm	18.3	0.72	2902	200
H-MU12M-8MA													

Dimensions are reference only, subject to change.

Feature

- Provides ultra-high purity Metal to metal seal for vacuum and positive pressure applications.
- Sealing is accomplished by compressing the gasket between the two beads during assembly of the male nut or body and female nut.



1. Gasket options include - silver plated stainless steel 316L, Nickel plated, unplated nickel or special request.
2. Roll stamped or Laser etch Marking & Heat Code Traceability
Hy-Lok Clean fittings are marked with Manufacturer, Part No., Material, Surface finish, Heat Code No. designation.
3. Typical surface finish is average Ra 0.25 μm (Ra 10 μin)
4. QA leak test port also allows visual inspection of sealing gasket prior to assembly.
5. The internal surface finish of the female nut is silver plated to ensure consistent, low make up torque.

Plating

- Female Nut-The internal surface of the nut is silver plated to avoid galling and reduce the pull up torque.
- Gasket options include-Silver plated stainless steel 316L, Nickel plated, unplated nickel or special request.

Testing

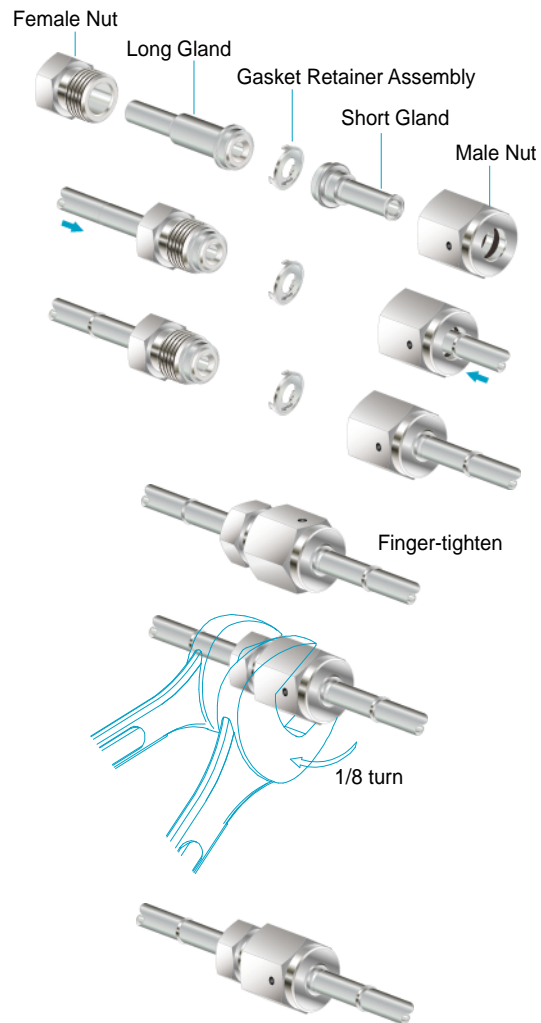
- ZCR Fittings have been helium leak tested to a rate of 1×10^{-10} atm/cc/sec with unplated, silver plated and copper gasket.
- Optional tests are available upon request.

Care for Installation

- Do not attempt to reuse gaskets, use new gasket for remake installations.
- Protect bead end of ZCR during welding, shipping or storage by using the appropriate cap or plug.
- ZCR Fittings will not compensate for tube misalignment.
- Protect internal silver plating on threads of female nuts during polishing, brazing, operations or additional cleaning. These operations could remove the silver plating and cause thread galling.

Assembly Instruction

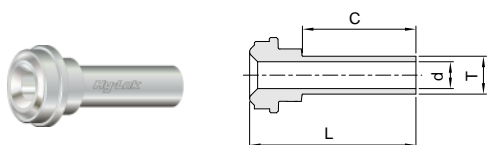
- Step 1. Prior to tightening fittings, make sure beads and gaskets are free of scratches and dirt.
- Step 2. Insert non-retained gasket into the female nut. The gasket is self aligning. Use caution not to damage sealing surfaces while inserting gasket into female nut.
- Step 3. Finger tighten male and female nuts assuring that all components have made proper contact and are in position for final tightening with wrenches. Inspection port in female nut allows for easy visual inspection.
- Step 4. Make a reference mark on both the female nut and male nut or body hex.
- Step 5. Hold the male nut or male body with the appropriate back up wrench and tighten the female nut 1/8 (316L and Ni gasket) turn past finger tight.



Caution

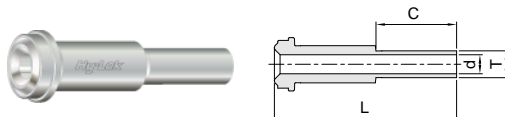
Do not rotate fixed thread components against the gasket. Hold the fixed thread component and tighten the corresponding rotating female or male nut 1/8 ~ 1/4 turn past finger tight.

Short Tube Butt Weld Gland
H-ZSG



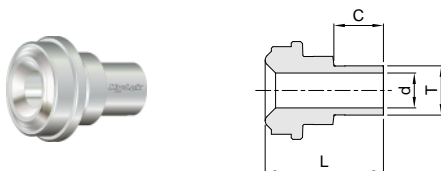
Part No.	ZCR Size	T Tube O.D.	Nominal Wall Thickness	d		L		C		Working Pressure psig (bar)		
				mm	in.	mm	in.	mm	in.	NI	SS	CU
H-ZSG - 2	1/8	1/8	0.028 in.	1.50	0.06	27.4	1.08	19.05	0.75	8500 (585)	6800 (468)	
H-ZSG - 4	1/4	1/4	0.035 in.	4.55	0.18	27.9	1.10			5100 (351)		
H-ZSG8- 4	1/2			7.67	0.30	28.4	1.12			3500 (241)	4300 (296)	2800 (192)
H-ZSG - 6		3/8	3300 (227)	2600 (179)								
H-ZSG - 8	1/2	0.049 in.	10.14	0.40			3500 (241)			2800 (192)		
H-ZSG - 6M	1/4	6mm	4.06	0.16	29.5	1.16	6800 (468)			5400 (372)		
H-ZSG - 8M		8mm	6.12	0.24			4900 (337)					
H-ZSG -10M	1/2	10mm	8.12	0.32	3500 (241)	2800 (192)						
H-ZSG -12M		12mm	9.96	0.39	3100 (213)	2400 (165)						
H-ZSG -18M	3/4	18mm	1.5 mm	15.00	0.59	31.0	1.22			3000 (206)		

Long Tube Butt Weld Gland
H-ZLG



Part No.	ZCR Size	T Tube O.D.	Nominal Wall Thickness	d		L		C		Working Pressure psig (bar)		
				mm	in.	mm	in.	mm	in.	NI	SS	CU
H-ZLG - 2	1/8	1/8	0.028 in.	1.50	0.06	36.1	1.42	19.05	0.75	8500 (585)	6800 (468)	
H-ZLG - 4	1/4	1/4	0.035 in.	4.55	0.18	43.2	1.70			5100 (351)		
H-ZLG8- 4	1/2			7.67	0.30	45.7	1.80			3500 (241)	4300 (296)	2800 (192)
H-ZLG - 6		3/8	3300 (227)	2600 (179)								
H-ZLG - 8	1/2	0.049 in.	10.14	0.40	45.5	1.79	3500 (241)			2800 (192)		
H-ZLG -12	3/4	3/4	0.065 in.	16.50	0.65	51.6	2.03			2400 (165)	1900 (130)	
H-ZLG -12T065				15.75	0.62							
H-ZLG -16	1	1	22.10	0.87	58.9	2.32	6800 (468)			5400 (372)		
H-ZLG - 6M	1/4	6mm	4.06	0.16	43.2	1.70	4900 (337)					
H-ZLG - 8M		8mm	6.12	0.24								
H-ZLG -10M	1/2	10mm	8.12	0.32	45.5	1.79	3500 (241)			2800 (192)		
H-ZLG -12M		12mm	9.96	0.39	3100 (213)	2400 (165)						
H-ZLG -18M	3/4	18mm	1.5 mm	15.00	0.59	51.6	2.03	3000 (206)				

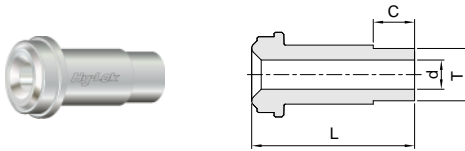
Mini Short Tube Butt Weld Gland
H-ZMSG



Part No.	ZCR Size	T Tube O.D.	Nominal Wall Thickness	d		L		C		Working Pressure psig (bar)		
				mm	in.	mm	in.	mm	in.	NI	SS	CU
H-ZMSG- 4	1/4	1/4	0.035 in.	4.55	0.18	15.2	0.60	6.35	0.25	5100 (351)		
H-ZMSG- 6	3/8	3/8		7.67	0.30	15.8	0.62			3300 (227)	2600 (179)	
H-ZMSG- 8	1/2	1/2	0.049 in.	10.14	0.40					3500 (241)	2800 (192)	
H-ZMSG- 6M	1/4	6mm	4.06	0.16	15.2	0.60	6800 (468)			5400 (372)		
H-ZMSG- 8M		8mm	6.12	0.24			4900 (337)					
H-ZMSG-10M	1/2	10mm	8.12	0.32	15.8	0.62	3500 (241)			2800 (192)		
H-ZMSG-12M		12mm	9.96	0.39			3100 (213)	2400 (165)				

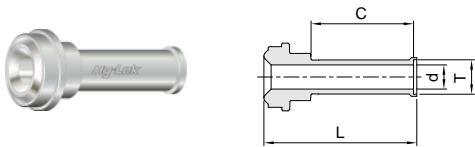
Dimensions are reference only, subject to change.

Mini Long Tube Weld Gland
H-ZMLG



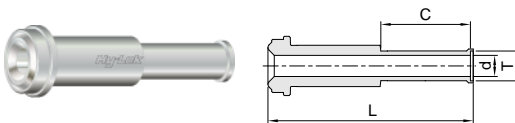
Part No.	ZCR Size	T Tube O.D.	Nominal Wall Thickness	d		L		C		Working Pressure psig (bar)		
				mm	in.	mm	in.	mm	in.	NI	SS	CU
H-ZMLG- 4	1/4	1/4	0.035 in.	4.55	0.18	30.5	1.20	6.35	0.25	5100 (351)		
H-ZMLG- 6	1/2	3/8		7.67	0.30	32.8	1.29			3300 (227) 2600 (179)		
H-ZMLG- 8		1/2	0.049 in.	10.14	0.40					3500 (241) 2800 (192)		
H-ZMLG- 6M	1/4	6mm	1.0 mm	4.06	0.16	31.0	1.22			6800 (468) 5400 (372)		
H-ZMLG- 8M		8mm		6.12	0.24	31.2	1.23			4900 (337)		
H-ZMLG-10M	1/2	10mm		8.12	0.32	32.8	1.29			3500 (241) 2800 (192)		
H-ZMLG-12M		12mm		9.96	0.39	33.8	1.33			3100 (213) 2400 (165)		

Short Tube Weld Gland with Shoulder
H-ZSG-A



Part No.	ZCR Size	T Tube O.D.	Nominal Wall Thickness	d		L		C		Working Pressure psig (bar)		
				mm	in.	mm	in.	mm	in.	NI	SS	CU
H-ZSG- 4A	1/4	1/4	0.035 in.	4.55	0.18	28.4	1.12	19.05	0.75	5100 (351)		
H-ZSG- 6A	1/2	3/8		7.67	0.30	29.2	1.15			3300 (227) 2600 (179)		
H-ZSG- 8A		1/2	0.049 in.	10.14	0.40	29.5	1.16			3500 (241) 2800 (192)		
H-ZSG- 6MA	1/4	6mm	1.0 mm	4.06	0.16	30.0	1.18			6800 (468) 5400 (372)		
H-ZSG- 8MA		8mm		6.12	0.24	30.2	1.19			4900 (337)		
H-ZSG-10MA	1/2	10mm		8.12	0.32	31.0	1.22			3500 (241) 2800 (192)		
H-ZSG-12MA		12mm		9.96	0.39	30.5	1.20			3100 (213) 2400 (165)		

Long Tube Weld Gland with Shoulder
H-ZLG-A

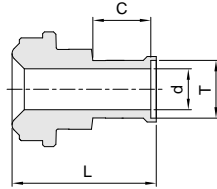
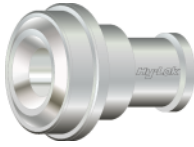


Part No.	ZCR Size	T Tube O.D.	Nominal Wall Thickness	d		L		C		Working Pressure psig (bar)				
				mm	in.	mm	in.	mm	in.	NI	SS	CU		
H-ZLG - 4A	1/4	1/4	0.035 in.	4.55	0.18	43.7	1.72	19.05	0.75	5100 (351)				
H-ZLG8- 4A	1/2					46.2	1.82			3500 (241) 2800 (192)				
H-ZLG - 6A		3/8		7.67	0.30	3300 (227) 2600 (179)								
H-ZLG - 8A	1/2	0.049 in.	10.14	0.40	46.5	1.83	3500 (241) 2800 (192)							
H-ZLG -12A	3/4	3/4	16.50	0.65	52.6	2.07	2400 (165) 1900 (130)							
H-ZLG -16A	1	1	0.065 in.	22.10	0.87	65.3	2.57			24.40	0.87	6800 (468) 5400 (372)		
H-ZLG - 6MA	1/4	6mm	1.0 mm	4.06	0.16	43.7	1.72			4900 (337)				
H-ZLG - 8MA		8mm		6.12	0.24	43.9	1.73			3500 (241) 2800 (192)				
H-ZLG -10MA	1/2	10mm		8.12	0.32	46.5	1.83	3100 (213) 2400 (165)						
H-ZLG -12MA		12mm		9.96	0.39	3000 (206)								
H-ZLG -18MA	3/4	18mm		1.5 mm	15.00	0.59	52.6	2.07						

Dimensions are reference only, subject to change.

Mini Short Tube Weld Gland with Shoulder

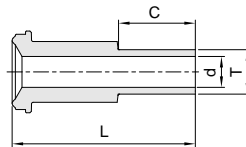
H-ZMSG-A



Part No.	ZCR Size	T Tube O.D.	Nominal Wall Thickness	d		L		C		Working Pressure psig (bar)		
				mm	in.	mm	in.	mm	in.	NI	SS	CU
H-ZMSG- 4A	1/4	1/4	0.035 in.	4.55	0.18	15.7	0.62	6.35	0.25	5100 (351)		
H-ZMSG- 6A	1/2	3/8		7.67	0.30	16.6	0.65			3300 (227)	2600 (179)	
H-ZMSG- 8A		1/2	0.049 in.	10.14	0.40	16.8	0.66			3500 (241)	2800 (192)	
H-ZMSG- 6MA	1/4	6mm	1.0 mm	4.06	0.16	15.7	0.62			6800 (468)	5400 (372)	
H-ZMSG- 8MA		8mm		6.12	0.24	16.6	0.65			4900 (337)		
H-ZMSG-10MA	1/2	10mm		8.12	0.32	16.8	0.66			3500 (241)	2800 (192)	
H-ZMSG-12MA		12mm		9.96	0.39					3100 (213)	2400 (165)	

Male Weld Gland

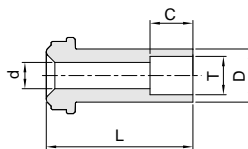
H-ZGM



Part No.	ZCR Size	T Tube O.D.	d		L		C		Working Pressure psig (bar)		
			mm	in.	mm	in.	mm	in.	NI	SS	CU
H-ZGM - 2	1/8	1/8	1.50	0.06	17.8	0.70	7.1	0.28	9000 (620)	11200 (771)	7200 (496)
H-ZGM4- 2	1/4				33.3	1.31			8000 (551)	10000 (689)	6400 (440)
H-ZGM - 4		1/4	3.00	0.12	38.1	1.50	10.4	0.41	3500 (241)	4300 (296)	2800 (192)
H-ZGM8- 4	1/2									3/8	7.10
H-ZGM - 6		1/2	10.14	0.40			3000 (206)	3700 (254)	2400 (165)		
H-ZGM - 8	3/4	3/4	13.50	0.53			50.8	2.00	15.7	0.62	2400 (165)
H-ZGM -12	1	1	19.10	0.75	56.4	2.22	20.6	0.81	2400 (165)	3000 (206)	1900 (130)

Socket Weld Gland

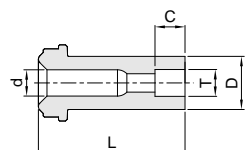
H-ZGS



Part No.	ZCR Size	T Tube Socket	d		D		L		C		Working Pressure psig (bar)		
			mm	in.	mm	in.	mm	in.	mm	in.	NI	SS	CU
H-ZGS- 2S	1/8	1/8	2.30	0.09	5.1	0.20	17.8	0.70	2.5	0.10	7100 (489)		
H-ZGS- 4S	1/4	1/4	4.55	0.18	8.9	0.35	33.3	1.31	7.1	0.28	5500 (378)		
H-ZGS- 6S	1/2	3/8	7.67	0.30	15.2	0.60	38.1	1.50	7.9	0.31	3500 (241)	4300 (291)	2800 (192)
H-ZGS- 8S		1/2	10.14	0.40					9.7	0.38	3000 (206)	2400 (165)	
H-ZGS-12S	3/4	3/4	13.50	0.53	22.4	0.88	50.8	2.00	11.2	0.44	2800 (192)	2200 (151)	
H-ZGS-16S	1	1	19.10	0.75	30.2	1.19	56.4	2.22	15.7	0.62	2400 (165)	3000 (206)	1900 (130)

Reducing Socket Weld Gland

H-ZGS

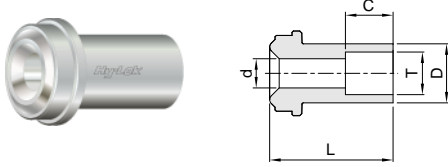


Part No.	ZCR Size	T Tube Socket	d		D		L		C		Working Pressure psig (bar)		
			mm	in.	mm	in.	mm	in.	mm	in.	NI	SS	CU
H-ZGS4-2S	1/4	1/8	2.30	0.09	8.9	0.35	33.3	1.31	2.5	0.10	8000 (551)		
H-ZGS8-4S	1/2	1/4	4.55	0.18	15.2	0.60	38.1	1.50	7.1	0.28	3500 (241)		

Dimensions are reference only, subject to change.

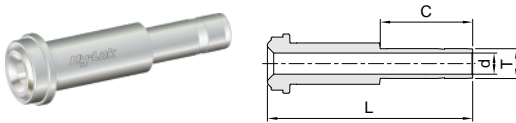
Clean Fittings

Short Socket Weld Gland H-ZGS



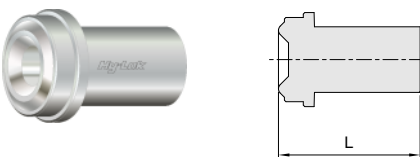
Part No.	ZCR Size	T Tube Socket	d		D		L		C		Working Pressure psig (bar)		
			mm	in.	mm	in.	mm	in.	mm	in.	NI	SS	CU
H-ZGS-4SL12.7	1/4	1/4	4.55	0.18	8.9	0.35	12.7	0.50	7.1	0.28	5500 (378)		
H-ZGS-4SL19.1							19.1	0.75					

Tube Adapter Gland H-ZGT



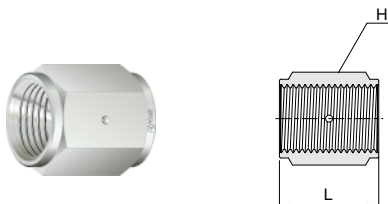
Part No.	ZCR Size	T Tube Socket	d		L		C		Working Pressure psig (bar)		
			mm	in.	mm	in.	mm	in.	NI	SS	CU
H-ZGT-4	1/4	1/4	4.30	0.17	41.0	1.62	16.2	0.64	8000 (511)	10000 (689)	6400 (440)
H-ZGT-6	1/2	3/8	6.80	0.27	46.0	1.81	17.8	0.70	3500 (241)	4300 (296)	2800 (192)
H-ZGT-8		1/2	9.40	0.37	49.3	1.94	24.4	0.96			

Blind Gland H-ZBG



Part No.	ZCR Size	L	
		mm	in.
H-ZBG- 2	1/8	17.8	0.70
H-ZBG- 4	1/4	33.3	1.31
H-ZBG- 8	1/2	38.1	1.50
H-ZBG-12	3/4	50.8	2.00
H-ZBG-16	1	56.4	2.22

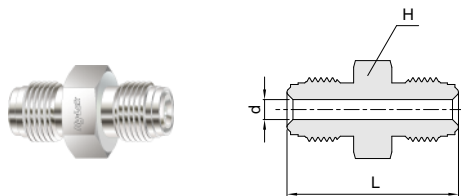
Coupling H-ZC



Part No.	ZCR Size	L		H
		mm	in.	in.
H-ZC- 2	1/8	16.8	0.66	7/16
H-ZC- 4	1/4	30.2	1.19	3/4
H-ZC- 8	1/2	33.3	1.31	1 1/16
H-ZC-12	3/4	42.7	1.68	1 1/2
H-ZC-16	1	51.8	2.04	1 3/4

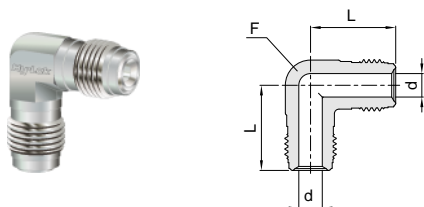
Dimensions are reference only, subject to change.

Double Male Union
H-ZUA



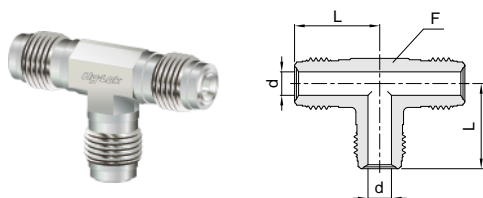
Part No.	ZCR Size	d		L		H	Working Pressure psig (bar)		
		mm	in.	mm	in.	in.	NI	SS	CU
H-ZUA- 2	1/8	2.30	0.09	28.7	1.13	3/8	9000 (620)	11200 (771)	7200 (496)
H-ZUA- 4	1/4	4.55	0.18	39.4	1.55	5/8	8000 (551)	10000 (689)	6400 (440)
H-ZUA- 8	1/2	10.14	0.40	46.7	1.84	15/16	3500 (241)	4300 (296)	2800 (192)
H-ZUA-12	3/4	15.70	0.62	62.0	2.44	1 5/16	3000 (206)	3700 (254)	2400 (165)
H-ZUA-16	1	22.10	0.87	65.8	2.59	1 5/8	2400 (165)	3000 (206)	1900 (130)

Union Elbow
H-ZLA



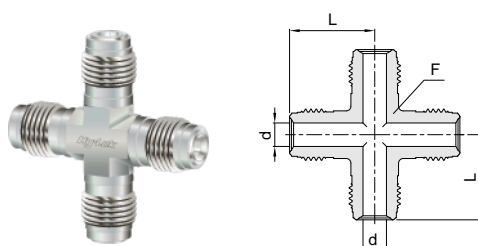
Part No.	ZCR Size	d		L		F Body Flat	Working Pressure psig (bar)		
		mm	in.	mm	in.	in.	NI	SS	CU
H-ZLA- 2	1/8	2.30	0.09	22.6	0.89	7/16	9000 (620)	11200 (771)	7200 (496)
H-ZLA- 4	1/4	4.55	0.18	27.2	1.07	1/2	8000 (551)	10000 (689)	6400 (440)
H-ZLA- 8	1/2	10.14	0.40	36.8	1.45	13/16	3500 (241)	4300 (296)	2800 (192)
H-ZLA-12	3/4	15.70	0.62	48.8	1.92	1 1/4	3000 (206)	3700 (254)	2400 (165)
H-ZLA-16	1	22.10	0.87	50.8	2.00	1 11/16	2400 (165)	3000 (206)	1900 (130)

Union Tee
H-ZTA



Part No.	ZCR Size	d		L		F Body Flat	Working Pressure psig (bar)		
		mm	in.	mm	in.	in.	NI	SS	CU
H-ZTA- 2	1/8	2.30	0.09	22.6	0.89	7/16	9000 (620)	11200 (771)	7200 (496)
H-ZTA- 4	1/4	4.55	0.18	27.2	1.07	1/2	8000 (551)	10000 (689)	6400 (440)
H-ZTA- 8	1/2	10.14	0.40	36.8	1.45	13/16	3500 (241)	4300 (296)	2800 (192)
H-ZTA-12	3/4	15.70	0.62	48.8	1.92	1 1/4	3000 (206)	3700 (254)	2400 (165)
H-ZTA-16	1	22.10	0.87	50.8	2.00	1 11/16	2400 (165)	3000 (206)	1900 (130)

Union Cross
H-ZXA

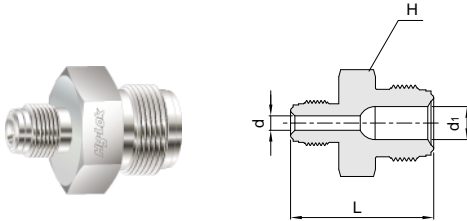


Part No.	ZCR Size	d		L		F Body Flat	Working Pressure psig (bar)		
		mm	in.	mm	in.	in.	NI	SS	CU
H-ZXA- 2	1/8	2.30	0.09	22.6	0.89	7/16	9000 (620)	11200 (771)	7200 (496)
H-ZXA- 4	1/4	4.55	0.18	27.2	1.07	1/2	8000 (551)	10000 (689)	6400 (440)
H-ZXA- 8	1/2	10.14	0.40	36.8	1.45	13/16	3500 (241)	4300 (296)	2800 (192)
H-ZXA-12	3/4	15.70	0.62	48.8	1.92	1 1/4	3000 (206)	3700 (254)	2400 (165)
H-ZXA-16	1	22.10	0.87	50.8	2.00	1 11/16	2400 (165)	3000 (206)	1900 (130)

Dimensions are reference only, subject to change.

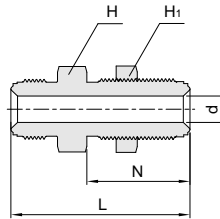
Clean Fittings

Double Male Reducing Union H-ZUR



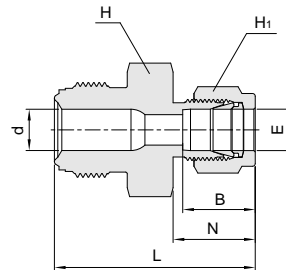
Part No.	ZCR Size		d		d ₁		L		H	Working Pressure psig (bar)		
			mm	in.	mm	in.	mm	in.		NI	SS	CU
H-ZUR4-2	1/4	1/8	4.55	0.18	2.30	0.09	34.8	1.37	5/8	8000 (551)	10000 (689)	6400 (440)
H-ZUR8-4	1/2	1/4	10.14	0.40	4.55	0.18	43.4	1.71	15/16	3500 (241)	4300 (296)	2800 (192)

Bulkhead Union H-ZBHU



Part No.	ZCR Size	d		L		N		H	H ₁	Panel Hole size		Max. Panel Thickness		Working Pressure psig (bar)		
		mm	in.	mm	in.	mm	in.			mm	in.	mm	inch	NI	SS	CU
H-ZBHU-4	1/4	4.55	0.18	56.6	2.23	33.0	1.30	3/4	3/4	14.5	0.57	11.10	0.44	8000 (551)	10000 (689)	6400 (440)
H-ZBHU-4L46				46.2	1.82	25.1	0.99					3.30	0.13			
H-ZBHU-8	1/2	10.14	0.40	65.3	2.57	37.6	1.48	1 1/16	1 1/16	22.5	0.89	12.70	0.50	3500 (241)	4300 (296)	2800 (192)
H-ZBHU-8L54				54.4	2.14	28.2	1.11					3.30	0.13			

Hy-Lok Tube Fitting Connector H-ZHC

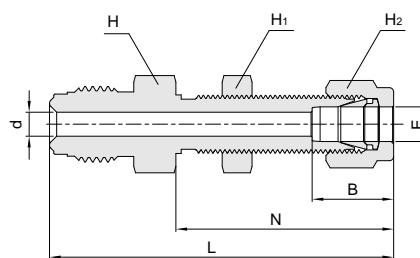


Part No.	ZCR Size	E Tube O.D.	d		L		B		N		H	H ₁	Working Pressure* psig (bar)		
			mm	in.	mm	in.	mm	in.	mm	in.			in.	NI	SS
H-ZHC4-2	1/4	1/8	4.55	0.18	38.6	1.52	12.7	0.50	15.2	0.60	5/8	7/16	8000 (551)	10000 (689)	6400 (440)
H-ZHC4-4		1/4			41.1	1.62	15.2	0.60	17.8	0.70		9/16			
H-ZHC4-6		3/8			43.0	1.70	16.8	0.66	19.3	0.76	11/16	11/16	6500 (447)		
H-ZHC8-6	1/2	3/8	10.14	0.40	46.7	1.84	22.9	0.90	21.8	0.86	15/16	7/8	3500 (241)	4300 (296)	2800 (192)
H-ZHC8-8					1/2	49.5									

Note : B,N,L are finger - tight dimensions.

Dimensions are reference only, subject to change.

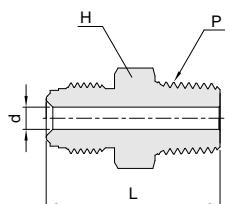
Hy-Lok Tube Fitting Bulkhead Connector H-ZBHC



Part No.	ZCR Size	E Tube O.D.	d		L		B		N		H	H ₁	H ₂	Panel Hole size		Max. Panel Thickness		Working Pressure psig (bar)		
			mm	in.	mm	in.	mm	in.	mm	in.				mm	in.	mm	in.	NI	SS	CU
H-ZBHC4-4	1/4	1/4	4.55	0.18	57.2	2.25	15.2	0.60	33.5	1.32	5/8	5/8	9/16	11.9	15/32	10.2	0.40	8000	10000	6400
H-ZBHC4-4L48					47.8	1.88			26.7	1.05						3.3	0.13	(551)	(689)	(440)
H-ZBHC8-6	1/2	3/8	7.10	0.28	64.5	2.54	16.8	0.66	36.8	1.45	15/16	3/4	11/16	15.1	19/32	11.1	0.44	3500	4300	2800
H-ZBHC8-8		1/2	10.14	0.40	69.6	2.74	22.9	0.90	41.9	1.65		15/16	7/8	19.8	25/32	12.7	0.50	(241)	(296)	(192)

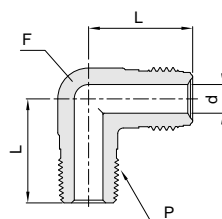
Note : B,N,L are finger - tight dimensions.

Male NPT Connector H-ZMC



Part No.	ZCR Size	d		L		H	P NPT	Working Pressure psig (bar)		
		mm	in.	mm	in.			NI	SS	CU
H-ZMC 2- 1N	1/8	2.30	0.09	27.2	1.07	3/8	1/16	9000 (620)		7200 (496)
H-ZMC 2- 2N							7/16			
H-ZMC 4- 2N	1/4	4.55	0.18	33.3	1.31	5/8	1/8	8000 (551)	10000 (689)	6400 (440)
H-ZMC 4- 4N				37.8	1.49					
H-ZMC 8- 6N	1/2	9.65	0.38	41.9	1.65	15/16	3/8	3500 (241)	4300 (296)	2800 (192)
H-ZMC 8- 8N							1/2	10.14	0.40	46.7
H-ZMC12-12N	3/4	15.70	0.62	55.6	2.19	1 5/8	3/4	3000 (206)	3700 (254)	2400 (165)
H-ZMC16-16N	1	22.10	0.87	62.7	2.47		1	2400 (165)	3000 (206)	1900 (130)

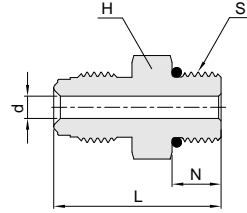
Male NPT Elbow H-ZLMA



Part No.	ZCR Size	d		L		L ₁		P NPT	F	Working Pressure psig (bar)		
		mm	in.	mm	in.	mm	in.			Flat	NI	SS
H-ZLMA4-2N	1/4	4.55	0.18	27.2	1.07	22.1	0.87	1/8	1/2	8000 (551)	10000 (689)	6400 (440)
H-ZLMA4-4N						26.7	1.05					
H-ZLMA8-6N	1/2	10.14	0.40	36.8	1.45	32.0	1.26	3/8	13/16	3500 (241)	4300 (296)	2800 (192)
H-ZLMA8-8N						36.8	1.45					

Dimensions are reference only, subject to change.

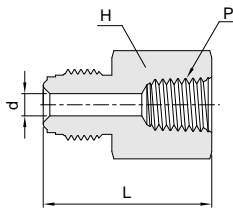
Straight thread O-Ring Seal Male Connector
H-ZSC



Part No.	ZCR Size	d		L		N		H	S Straight Thread	O-Ring Uniform Size	Working Pressure psig (bar)		
		mm	in.	mm	in.	mm	in.	in.			NI	SS	CU
H-ZSC4- 6U	1/4	4.55	0.18	33.8	1.33	9.9	0.39	3/4	9/16-18	-906	4500 (310)		
H-ZSC8- 6U	1/2	10.14	0.40	37.6	1.48			1			15/16	2800 (192)	
H-ZSC8-10U				42.2	1.66	12.7	0.50	1			7/8-14		3500 (241)

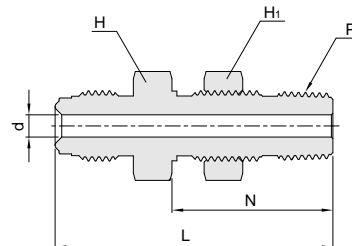
Note : Standard O-Ring is viton other materials are available upon request.

Female NPT Connector
H-ZFC



Part No.	ZCR Size	d		L		H	P NPT	Working Pressure psig (bar)		
		mm	in.	mm	in.	in.		NI	SS	CU
H-ZFC 2- 1N	1/8	2.30	0.09	27.9	1.10	7/16	1/16	6700 (461)		
H-ZFC 2- 2N				30.2	1.19	9/16		6500 (447)		
H-ZFC 4- 2N	1/4	4.55	0.18	35.8	1.41	5/8	1/8	8000 (551)	6400 (440)	
H-ZFC 4- 4N				39.1	1.54	3/4		1/4	6600 (454)	5200 (358)
H-ZFC 8- 6N	1/2	10.14	0.40	44.7	1.76	15/16	3/8	3500 (241)	4300 (296)	2800 (192)
H-ZFC 8- 8N				50.5	1.99	1 1/16				
H-ZFC12-12N	3/4	15.70	0.62	59.9	2.36	1 5/16	3/4	3000 (206)	3700 (254)	2400 (165)
H-ZFC16-16N	1	22.10	0.87	63.8	2.51	1 5/8	1	2400 (165)	3000 (206)	1900 (130)

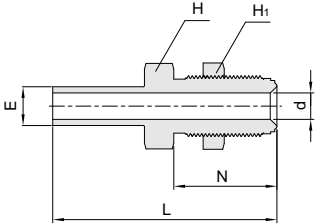
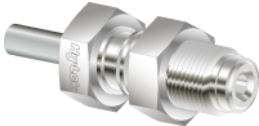
Bulkhead Male Connector
H-ZBMC



Part No.	ZCR Size	d		L		N		H	H ₁	P NPT	Panel Hole size		Max. Panel Thickness		Working Pressure psig (bar)		
		mm	in.	mm	in.	mm	in.	in.	in.		mm	in.	mm	in.	NI	SS	CU
H-ZBMC4-4N	1/4	4.55	0.18	56.1	2.21	31.5	1.24	13/16	13/16	1/4	16.7	0.66	9.6	0.38	8000 (551)		6400 (440)
H-ZBMC8-4N	1/2	10.14	0.40	59.4	2.34			15/16							3500 (241)	4370 (301)	2800 (192)

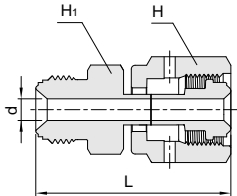
Dimensions are reference only, subject to change.

Tube Butt Weld Bulkhead Connector
H-ZBT



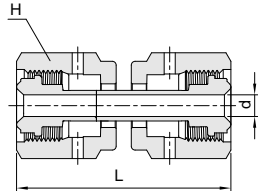
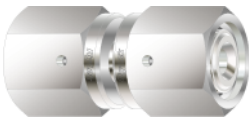
Part No.	ZCR Size	E Tube O.D.	d		L		N		H	H ₁	Panel Hole size		Max. Panel Thickness		Working Pressure psig (bar)		
			mm	in.	mm	in.	mm	in.			mm	in.	mm	in.	NI	SS	CU
H-ZBT4-4	1/4	1/4	4.55	0.18	59.9	2.36	33.0	1.30	3/4	3/4	14.5	0.57	11.1	0.44	5100 (351)		
H-ZBT4-4L50					49.5	1.95	25.1	0.99					3.30	0.13			

Swivel Male/Female Union
H-ZSMU



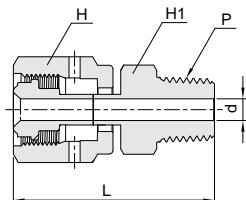
Part No.	ZCR Size	d		L		H	H ₁	Working Pressure psig (bar)		
		mm	in.	mm	in.			in.	NI	SS
H-ZSMU-4	1/4	4.55	0.18	42.9	1.69	3/4	5/8	80000 (551)	10000 (689)	6400 (440)

Swivel Female Union
H-ZSUA



Part No.	ZCR Size	d		L		H	Working Pressure psig (bar)		
		mm	in.	mm	in.		in.	NI	SS
H-ZSUA-4	1/4	4.55	0.18	43.4	1.71	3/4	8000 (551)	10000 (689)	6400 (440)
H-ZSUA-8	1/2	10.14	0.40	46.7	1.84	1 1/16	3500 (241)	4300 (296)	2800 (192)

Swivel Male NPT Connector
H-ZSMC

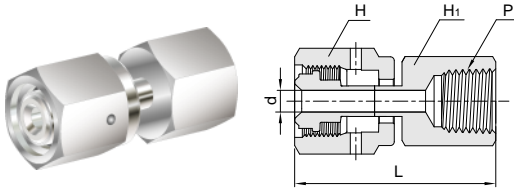


Part No.	ZCR Size	d		L		H	H ₁	P NPT	Working Pressure psig (bar)		
		mm	in.	mm	in.				in.	in.	NI
H-ZSMC4-2N	1/4	4.55	0.18	40.1	1.58	3/4	7/16	1/8	8000 (551)		6400 (440)
H-ZSMC4-4N				45.5	1.79						
H-ZSMC8-6N	1/2	10.14	0.40	48.0	1.89	1 1/16	11/16	3/8	3500 (241)	4300 (296)	2800 (192)
H-ZSMC8-8N				53.1	2.09						

Dimensions are reference only, subject to change.

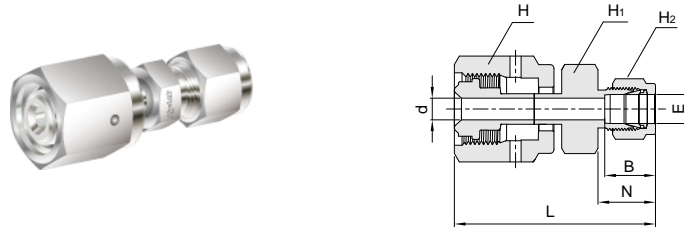
Clean Fittings

Swivel Female NPT Connector H-ZSFC



Part No.	ZCR Size	d		L		H	H ₁	P NPT	Working Pressure psig (bar)		
		mm	in.	mm	in.	in.	in.		NI	SS	CU
H-ZSFC4-4N	1/4	4.55	0.18	45.0	1.77	3/4	3/4	1/4	6600 (454)		
H-ZSFC8-6N	3/8	10.14	0.40	49.5	1.95	1 1/16	7/8	3/8	3500 (241)	4300 (296)	2800 (192)
H-ZSFC8-8N	1/2			55.4	2.18						

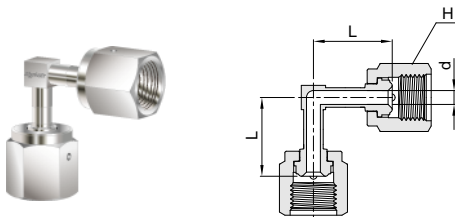
Swivel Hy-Lok Tube Fitting Connector H-ZSMH



Part No.	Tube O.D.	E Tube O.D.	d		L		B		N		H	H ₁	H ₂	Working Pressure*		
			mm	in.	mm	in.	mm	in.	mm	in.	in.	in.	in.	NI	SS	CU
H-ZSMH4-4	1/4	1/4	4.55	0.18	49.3	1.94	15.2	0.60	17.8	0.70	3/4	1/2	9/16	8000 (551)	10000 (689)	6400 (440)
H-ZSMH4-6		3/8			50.0	1.97	16.8	0.66	19.3	0.76		5/8	11/16	6500 (447)		5200 (358)
H-ZSMH8-8	1/2	1/2	10.14	0.40	56.6	2.23	22.9	0.90	21.8	0.86	1 1/16	13/16	7/8	3500 (241)	4300 (296)	2800 (192)

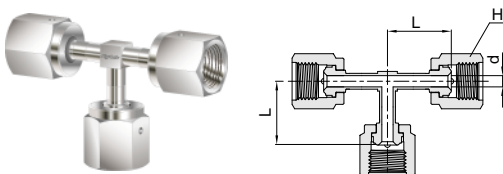
Note : B,N,L are finger - tight dimensions.

Swivel Elbow H-ZSLA



Part No.	ZCR Size	d		L		H	Working Pressure psig (bar)		
		mm	in.	mm	in.	in.	NI	SS	CU
H-ZSLA-4	1/4	4.55	0.18	25.4	1.00	3/4	5100 (351)		

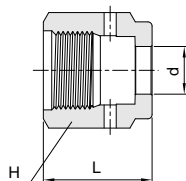
Swivel Tee H-ZSTA



Part No.	ZCR Size	d		L		H	Working Pressure psig (bar)		
		mm	in.	mm	in.	in.	NI	SS	CU
H-ZSTA-4	1/4	4.55	0.18	25.4	1.00	3/4	5100 (351)		

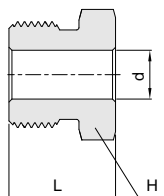
Dimensions are reference only, subject to change.

Female Nut
H-ZFN



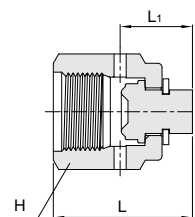
Part No.	ZCR Size	d		L		H
		mm	in.	mm	in.	in.
H-ZFN- 2	1/8	5.30	0.21	13.5	0.53	7/16
H-ZFN- 4	1/4	9.15	0.36	20.6	0.81	3/4
H-ZFN- 8	1/2	15.50	0.61	22.4	0.88	1 1/16
H-ZFN-12	3/4	22.60	0.89	28.4	1.12	1 1/2
H-ZFN-16	1	30.50	1.20	34.0	1.34	1 3/4

Male Nut
H-ZMN



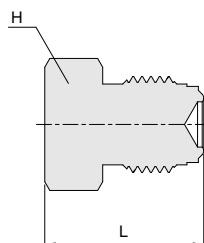
Part No.	ZCR Size	d		L		H
		mm	in.	mm	in.	in.
H-ZMN- 2	1/8	5.30	0.21	12.7	0.50	3/8
H-ZMN- 4	1/4	9.15	0.36	18.0	0.71	5/8
H-ZMN- 8	1/2	15.50	0.61	20.6	0.81	15/16
H-ZMN-12	3/4	22.60	0.89	25.4	1.00	1 5/16
H-ZMN-16	1	30.50	1.20	30.2	1.19	1 5/8

Cap
H-ZCP



Part No.	ZCR Size	L		L1		H
		mm	in.	mm	in.	in.
H-ZCP- 2	1/8	16.0	0.63	7.6	0.30	7/16
H-ZCP- 4	1/4	23.9	0.94	11.3	0.44	3/4
H-ZCP- 8	1/2	25.6	1.01	11.4	0.45	1 1/16
H-ZCP-12	3/4	32.8	1.29	13.7	0.54	1 1/2
H-ZCP-16	1	39.1	1.54	16.0	0.63	1 3/4

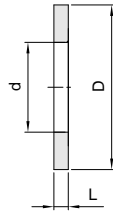
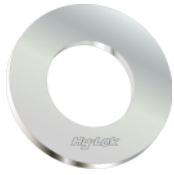
Plug
H-ZP



Part No.	ZCR Size	L		H
		mm	in.	in.
H-ZP- 2	1/8	17.3	0.68	3/8
H-ZP- 4	1/4	23.4	0.92	5/8
H-ZP- 8	1/2	27.4	1.08	15/16
H-ZP-12	3/4	36.3	1.43	1 5/16
H-ZP-16	1	38.6	1.52	1 5/8

Dimensions are reference only, subject to change.

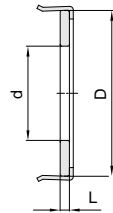
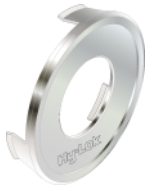
Gasket
H-ZGSK



Part No.	ZCR Size	d		D		L	
		mm	in.	mm	in.	mm	in.
H-ZGSK- 2	1/8	2.3	0.09	6.6	0.26	0.5	0.02
H-ZGSK- 4	1/4	5.6	0.22	12.5	0.49	0.8	0.03
H-ZGSK- 8	1/2	11.2	0.44	19.8	0.78		
H-ZGSK-12	3/4	16.8	0.66	29.0	1.14		
H-ZGSK-16	1	22.6	0.89	35.6	1.40		

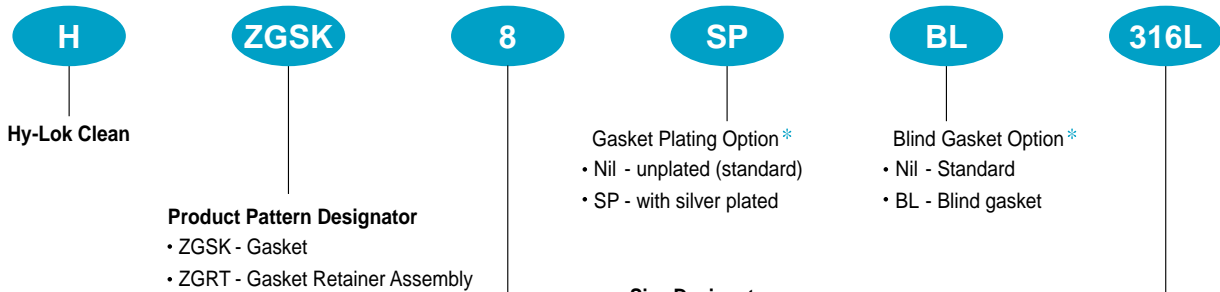
Note : Cannot be used in a gasket retainer assembly.

Gasket Retainer Assembly
H-ZGRT



Part No.	ZCR Size	d		D		L	
		mm	in.	mm	in.	mm	in.
H-ZGRT- 4	1/4	5.6	0.22	11.9	0.47	0.8	0.03
H-ZGRT- 8	1/2	11.2	0.44	19.5	0.77		
H-ZGRT-12	3/4	16.8	0.66	27.4	1.08		
H-ZGRT-16	1	22.6	0.89	34.0	1.34		

Ordering Information for Gasket & Gasket Retainer Assembly



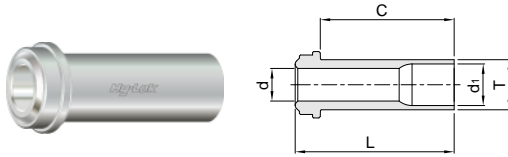
Note

1. Retainer Material for 316L Stainless Steel, Nickel and Copper gasket Retainer Assemblies are 316L Stainless Steel.
2. * ' ' No designator is required for standard gasket e.g. H-ZGSK-8 - 316L
3. For application of Blind Gaskets exceed not a differential pressure rating of 100 psi(6.8 bar)

Designator	ZCR Size
2	1/8
4	1/4
8	1/2
12	3/4
16	1

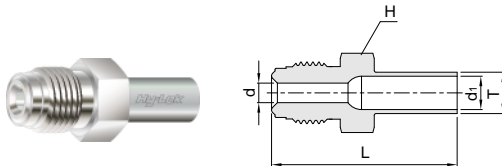
Dimensions are reference only, subject to change.

High Flow Tube Butt Weld Gland
H-ZHG



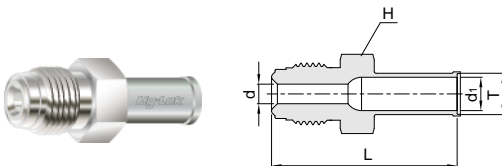
Part No.	ZCR Size	T Tube O.D.	d		d ₁		L		Working Pressure psig (bar)		
			mm	in.	mm	in.	mm	in.	NI	SS	CU
H-ZHG-6L15.2	1/4	3/8	6.35	0.25	7.9	0.31	15.2	0.60	3300 (227)		
H-ZHG-6L30.2							30.2	1.19			
H-ZHG-6L33.3							33.3	1.31			

High Flow Tube Butt Weld Reducer
H-ZR



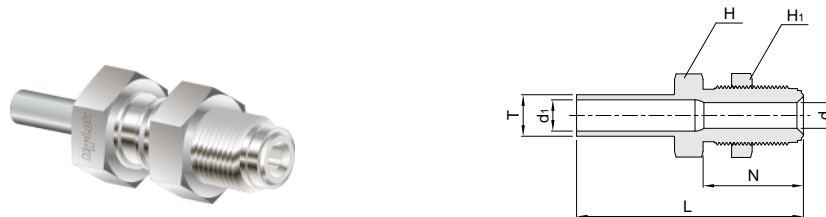
Part No.	ZCR Size	T Tube O.D.	d		d ₁		L		H	Working Pressure psig (bar)		
			mm	in.	mm	in.	mm	in.	in.	NI	SS	CU
H-ZR4-6	1/4	3/8	6.35	0.25	7.9	0.31	42.7	1.68	5/8	3300 (227)		

High Flow Tube Weld Reducer with Shoulder
H-ZR-A



Part No.	ZCR Size	T Tube O.D.	d		d ₁		L		H	Working Pressure psig (bar)		
			mm	in.	mm	in.	mm	in.	in.	NI	SS	CU
H-ZR4-6A	1/4	3/8	6.35	0.25	7.9	0.31	43.4	1.71	5/8	3300 (227)		

High Flow Tube Butt Weld Bulkhead Connector
H-ZHBT



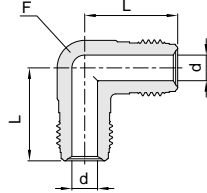
Part No.	ZCR Size	E Tube O.D.	d		d ₁		L		N		H	H ₁	Panel Hole size		Max. Panel Thickness		Working Pressure psig (bar)		
			mm	in.	mm	in.	mm	in.	mm	in.	in.	in.	mm	in.	mm	in.	NI	SS	CU
H-ZHBT4-6	1/4	3/8	6.35	0.25	7.9	0.31	59.9	2.36	33.0	1.30	3/4	3/4	14.5	0.57	11.1	0.44	3300 (227)		

Dimensions are reference only, subject to change.

Clean Fittings

High Flow Union Elbow

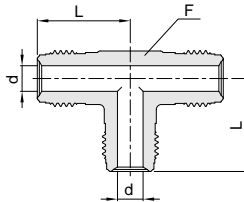
H-ZHLA



Part No.	ZCR Size	d		L		F Body Flat in.	Working Pressure psig (bar)		
		mm	in.	mm	in.		NI	SS	CU
H-ZHLA-4	1/4	6.35	0.25	27.2	1.07	1/2	8000 (551)	10000 (689)	6400 (440)

High Flow Union Tee

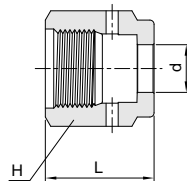
H-ZHTA



Part No.	ZCR Size	d		L		F Body Flat in.	Working Pressure psig (bar)		
		mm	in.	mm	in.		NI	SS	CU
H-ZHTA-4	1/4	6.35	0.25	27.2	1.07	1/2	8000 (551)	10000 (689)	6400 (440)

High Flow Female Nut

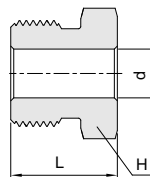
H-ZHFN



Part No.	ZCR Size	d		L		H in.
		mm	in.	mm	in.	
H-ZHFN-4	1 / 4	9.9	0.39	20.6	0.81	3/4

High Flow Male Nut

H-ZHMN



Part No.	ZCR Size	d		L		H in.
		mm	in.	mm	in.	
H-ZHMN-4	1 / 4	9.9	0.39	18.0	0.71	5/8

Dimensions are reference only, subject to change.

Ordering Information



- 1. Clean Fitting : Designator "H"
- 2. Name of Fitting : See Title Name of product.
- 3. Tube O.D. : See Tube O.D. or ZCR Size Designator.
- 4. Reduced Ends : See Tube O.D. or ZCR Size Designator in case of Reducing or other connection.
- 5. Type of Weld : See Weld Designator
- 6. Surface Grade : See Surface Finish Designator.
- 7. Material : See Material Designator.

Tube O.D. Designator					
Size (Inch)	1/4	3/8	1/2	3/4	1
Identifier	4	6	8	12	16
Size (Metric)	6mm	8mm	10mm	12mm	18mm
Identifier	6M	8M	10M	12M	18M

Weld Designator	
Type of Weld	Identifier
Butt Weld (Without Shoulder)	Standard
Automatic Weld (With Shoulder)	A
Socket Weld	S
Male Weld	M

ZCR Size Designator					
Size (Inch)	1/8	1/4	1/2	3/4	1
Identifier	2	4	8	12	16

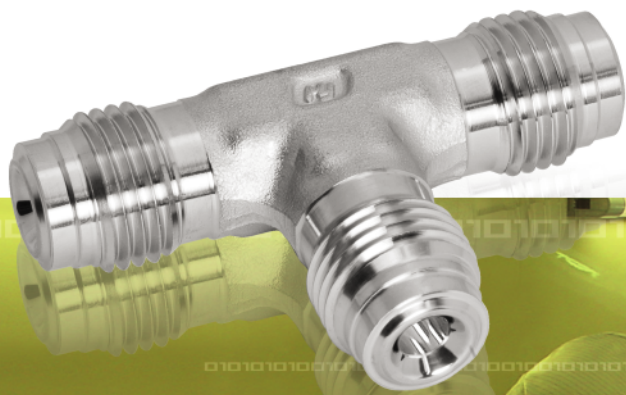
Surface Finish Designator		
Grade	B.A Grade	High Grade
Identifier	B	H

Note : Surface Finishes Information see page 3.

Material Designator	
Identifier	Material
SM6L	Single Vacuum Melt 316L Stainless Steel
VV6L	Double Vacuum Melt 316L Stainless Steel

SAFETY in FITTING SELECTION

For proper, safe, trouble-free installation, operation and maintenance of fluid systems, material compatibility, pressure/temperature ratings, and application details must be considered in the selection of fittings. Improper selection or use of products described in this catalog can cause personal injury or property losses. It is the responsibility of system designer and user to select and use the products for their specific applications.



Distributed by :