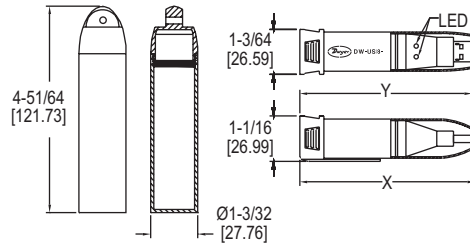




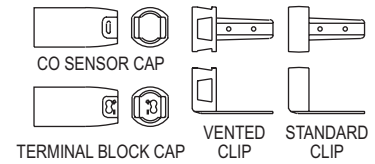
## Series DW-USB Compact USB Data Logger

### Specifications - Installation and Operating Instructions



MODEL DW-USB-CASE

MODEL DW-USB-X



The **SERIES DW-USB** Compact USB Data Logger allow users to monitor temperature, humidity, dew point, voltage, current, or carbon monoxide. The user can select the sampling rate, start time, high/low alarm settings, and temperature unit parameters with the free downloadable Windows®-based application. Stored data is downloaded by plugging the module into a PC's USB port. Alarm status and low battery is indicated via built-in flashing LED's. When the protective cap is fitted, the data logger resists moisture to IP67 standards.

#### LED FLASHING MODES

##### DW-USB-1: Features an orange problem condition LED and green/red LED for alarm status.

	(Single flash) (Parpadeo simple)	Logging, no alarm on channel. Registrando, sin alarma.
	(Double flash) (Parpadeo doble)	Delayed start. El Registrado está preparado.
	(Single flash) (Parpadeo simple)	Logging, low alarm on channel. Alarma baja.
	(Double flash) (Parpadeo doble)	Logging, high alarm on channel. Alarma alta.
	(Single/Double flash every 10 sec) (Parpadeo doble/simple cada 10 seg)	Memory full. Memoria llena.
	(Single flash every 60 sec) (Parpadeo simple cada 60 seg)	Low battery. Batería baja.

##### DW-USB-2, DW-USB-2-HA: Features 2 clearly marked bi-colored LEDs, one for temperature and one for RH.

	(Single flash) (Parpadeo simple)	Logging, no alarm on channel. Registrando, sin alarma.
	(Double flash) (Parpadeo doble)	Delayed start. El Registrado está preparado.
	(Triple flash) (Parpadeo triple)	Memory full, no alarm on last stored value. Registrador lleno, sin alarma en el canal.
	(Single flash) (Parpadeo simple)	Logging, low alarm on channel. Registrando, alarma baja en el canal.
	(Double flash) (Parpadeo doble)	Logging, high alarm on channel. Registrando, alarma alta en el canal.
	(Triple flash) (Parpadeo triple)	Logger full, alarm on channel. Registrador lleno, alarma en el canal.

#### SPECIFICATIONS

**Range:** DW-USB-1: -31 to 176°F (-35 to 80°C); DW-USB-2: -31 to 176°F (-35 to 80°C), 0 to 100% RH; DW-USB-2-HA: -31 to 176°F (-35 to 80°C), 0 to 100% RH; DW-USB-3: 0 to 30 VDC; DW-USB-4: 4 to 20 mA; DW-USB-5: 0 to 1000 ppm; DW-USB-5-LR: 0 to 300 ppm; DW-USB-6: J-type: -202 to 1652°F (-130 to 900°C); K-type: -328 to 2372°F (-200 to 1300°C); T-type: -328 to 662°F (-200 to 350°C).

**Accuracy:** DW-USB-1: ±2°F (±1°C); DW-USB-2: ±1°F (±0.5°C), 3% RH; DW-USB-2-HA: ±0.6°F (±0.3°C), 2% RH; DW-USB-3: ±1%; DW-USB-4: ±1%; DW-USB-5: ±6%; DW-USB-5-LR: ±4%; DW-USB-6: ±1.5°F (±1°C).

**Resolution:** DW-USB-1: 1°F (0.5°C); DW-USB-2: 1°F (0.5°C), 0.5% RH; DW-USB-2-HA: 1°F (0.5°C), 0.5% RH; DW-USB-3: 50 mVDC; DW-USB-4: 0.05 mA; DW-USB-5: 0.5 ppm; DW-USB-5-LR: 0.5 ppm; DW-USB-6: 0.9°F (0.5°C).

**Memory Size:** 16,382 temperature; 16,382 each temperature and RH; 32,764 readings for voltage, current, and thermocouple; and 32,510 for carbon monoxide.

**Sampling Mode:** Stop on memory full.

**Sampling Rate:** Selectable from 10 sec to 12 hrs (DW-USB-1, DW-USB-2, DW-USB-2-HA), 1 sec to 12 hrs (DW-USB-3, DW-USB-4, DW-USB-5, DW-USB-5-LR;) and 10 sec to 5 min (DW-USB-6).

**Computer Requirements:** Compatible with Windows® 7, Windows® 8, and Windows® 10.

**Power Requirements:** 3.6V lithium battery.

**Housing:** ABS plastic blend.

**Alarms:** Programmable high/low.






**Interface:** USB port.

**Weight:** 1.5 oz (43 g).

**Agency Approvals:** CE, RoHS.

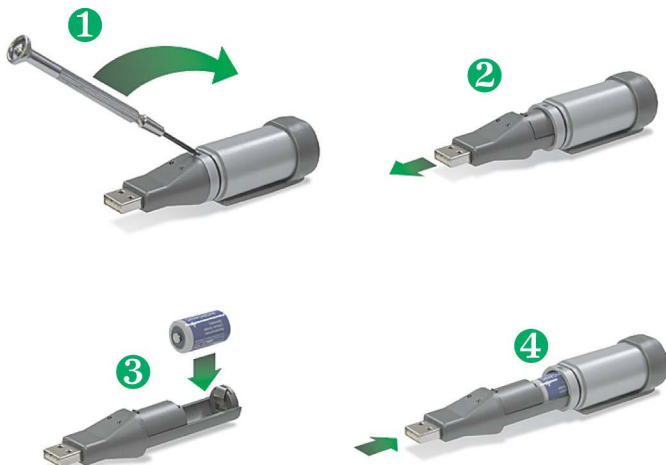
Windows® is a registered trademark of Microsoft Corporation.

**DW-USB-3, DW-USB-4, DW-USB-5, DW-USB-5-LR, and DW-USB-6: Features a red and green LED**

	(Single flash) (Parpadeo simple)	every 10 seconds cada 10 segundos	Logging, no alarm on channel. Registrando, sin alarma.
		every 20 seconds cada 20 segundos	Logging, no alarm on channel, low battery. Registrando, sin alarma, batería baja.
		every 30 seconds cada 30 segundos	Delayed start. Inicio demorado.
	(Double flash) (Parpadeo doble)	every 20 seconds cada 20 segundos	Memory full, no alarm on last stored value.
		every 20 seconds cada 20 segundos	Registrador lleno, sin alarma en el canal.
	(Single flash) (Parpadeo simple)	every 10 seconds cada 10 segundos	Logging, low alarm on channel. Registrando, alarma baja en el canal.
		every 20 seconds cada 20 segundos	Logging, low alarm on channel, low battery.
		every 20 seconds cada 20 segundos	Registrando, alarma baja, batería baja.
	Double flash) (Parpadeo doble)	every 10 seconds cada 10 segundos	Logging, high alarm on channel, low battery.
		every 20 seconds cada 20 segundos	Registrando, alarma alta en el canal.
		every 20 seconds cada 20 segundos	Logging, high alarm on channel, low battery.
	(Single flash) (Parpadeo simple)	every 10 seconds cada 10 segundos	Logging, high alarm on channel, low battery.
		every 20 seconds cada 20 segundos	Registrando, alarma alta en el canal, batería baja.
			Memory full, alarm on last stored value. Memoria llena, alarma en el canal.

**BATTERY INSTALLATION**

Before using the data logger, you will need to insert the 3.6 V 1/2 AA battery provided, following the instructions below.



**SOFTWARE INSTALLATION**

This software must be installed prior to the USB Driver. Please follow the instructions below then refer to the USB Driver Installation based on the Windows® operating system you are using.

1. Visit our website [www.dwyer-inst.com/DW-USBSOFTWARE](http://www.dwyer-inst.com/DW-USBSOFTWARE) and click on the download link. If the download folder doesn't open directly, go to your computer's "Downloads" folder and double-click on the "EasyLogUSBV610\_Dwyer" folder.
2. Double-click on "setup" then follow the on screen instructions to complete the Configuration Software Installation.
3. An EasyLog USB icon will now be placed on your desktop.

**USB DRIVER INSTALLATION**

**Windows® 7/Windows® 8/Windows® 10 Operating Systems:**

You must install the Configuration Software as instructed in the previous section before going through these steps.

1. Insert the USB data logger directly into a USB port on the computer. Installation screens should automatically appear.
2. Follow the on screen instructions to complete the Configuration Software Installation. If a compatibility error window appears, click "Continue Anyway".  
**Note:** This will not cause any adverse changes/effects on your computer.
3. You can now begin using our data logger by double clicking on the EasyLog USB icon on your computers desktop.



**Carbon Monoxide Safety Notice**

The DW-USB-6 is not a suitable substitute for a domestic or industrial carbon monoxide detector/alarm.

**MAINTENANCE**

Upon final installation of the Compact DW-USB Data Logger, no routine maintenance is required. Leaving the logger plugged into your computer for an extended period of time will considerably lower its battery life. The Series DW-USB is not field serviceable and should be returned if repair is needed (field repair should not be attempted and may void warranty). Be sure to include a brief description of the problem plus any relevant application notes. Contact customer service to receive a Return Goods Authorization number before shipping.