

# LMW WATER/GLYCOL PUMPS



- Ultra compact for given pressure and flow rates
- Flow/pressure combinations within 9 Kw range – up to 11.5 l/m or up to 1380 bar
- All externally exposed components 316 stainless steel
- No external lubrication or cooling systems
- Direct coupled option with horizontal mounting.

The high pressure 9Kw type LMW hydraulic pump is specifically designed for water-based fluids. Separation of the lubricating oil and the pumped fluid is achieved by the installation of a cavity between the cylinder block and the case. Bypass from the pistons is collected in this cavity and returned to the inlet side of the pump. The LMW pump incorporates three or six axial pistons actuated by a single rotating swash plate.

## Installation

Rotation is bi-directional and the pump may be mounted horizontally or vertically. Vertical motor pump units are supplied with a bellhousing and coupling. Horizontal units have the option of direct coupling between the pump and motors from 90 to 112 frame size.

A suction filter of 150 microns or better should be used. Finer filtration is desirable for the pump life, but is important that the inlet flowrate to the pump is not restricted and no more than -2 in.Hg is measured in the suction pipework under pumping conditions. Where possible a positive pressure should be maintained in the suction pipework under flowing conditions. When the pump is stationary the suction line should be kept under positive pressure to allow priming.

**Important** - pumps are delivered from Marshalsea with the case lubricating oil drained. Before the pumps are used, the case should be filled with Castrol Alphasyn PG150 to the level specified on the pump technical data sheet

## Material

All external components manufactured from 316 stainless steel – pump shaft is medium carbon steel EN8. High pressure variants use some 17/4 PH externals.

## Weight

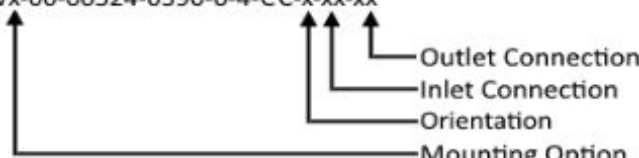
24 Kg

## Pump characteristics options

Part Number	Cylinders	Flow	Flow @ 1450 RPM		Flow @ 1750 RPM		Pressure
		cc/rev	l/m	Usg/m	l/m	Usg/m	
LMW-00-00135-1040-3-4-CC-X-XX-XX	3	1.35	1.95	0.515	2.35	0.621	1040
LMW-00-00135-1380-3-4-CC-X-XX-XX	3	1.35	1.95	0.515	2.35	0.621	1380
LMW-00-00190-1040-3-4-CC-X-XX-XX	3	1.90	2.75	0.726	3.32	0.876	1040
LMW-00-00190-1380-3-4-CC-X-XX-XX	3	1.90	2.75	0.726	3.32	0.876	1380
LMW-00-00254-1040-3-4-CC-X-XX-XX	3	2.54	3.69	0.973	4.45	1.175	1040
LMW-00-00269-1040-6-4-CC-X-XX-XX	6	2.69	3.90	1.030	4.71	1.243	1040
LMW-00-00379-0810-6-4-CC-X-XX-XX	6	3.79	5.50	1.452	6.64	1.753	810
LMW-00-00509-0805-6-4-CC-X-XX-XX	6	5.09	7.37	1.947	8.90	2.350	605
LMW-00-00605-0505-6-4-CC-X-XX-XX	6	6.05	8.78	2.317	10.59	2.796	505
LMW-00-00657-0465-6-4-CC-X-XX-XX	6	6.57	9.52	2.514	11.49	3.034	465

## Additional Options

LMWx-00-00524-0590-6-4-CC-x-xx-xx



## Mounting Option

- LMW - Direct coupling to IEC 100/112 Frame B34 Face motors (Horiz mount only)
- LMW95 - Direct coupling to IEC 90 Frame B35 and V1 Flange motors (Horiz mount only)
- LMW105 - Direct coupling to IEC 100/112 Frame B35 and V1 Flange motors. (Horiz mount only)
- LMW144 - Direct coupling to NEMA 143T/145T Frame C face (B34) motors (Horiz mount only)
- LMW145 - Direct coupling to NEMA 143T/145T Frame D flange (B35 and V1) motors (Horiz mount only)
- LMW184 - Direct coupling to NEMA 182T/184T Frame C face (B34) motors (Horiz mount only)
- LMW185 - Direct coupling to NEMA 182T/184T Frame D flange (B35 and V1) motors (Horiz mount only)
- LMW214 - Direct coupling to NEMA 213T/215T Frame C face (B34) motors (Horiz mount only)
- LMW215 - Direct coupling to NEMA 215T/215T Frame D flange (B35 and V1) motors (Horiz mount only)
- LMWS - Shaft driven pump for use with a Bellhousing and Coupling up to 132 Frame (Vertical and Horiz mount)
- LMWS16 - Shaft driven pump for use with a Bellhousing and Coupling 160 Frame (Vertical and Horiz mount)

## Orientation

- H - Horizontal
- V - Vertical (LMWS Only)

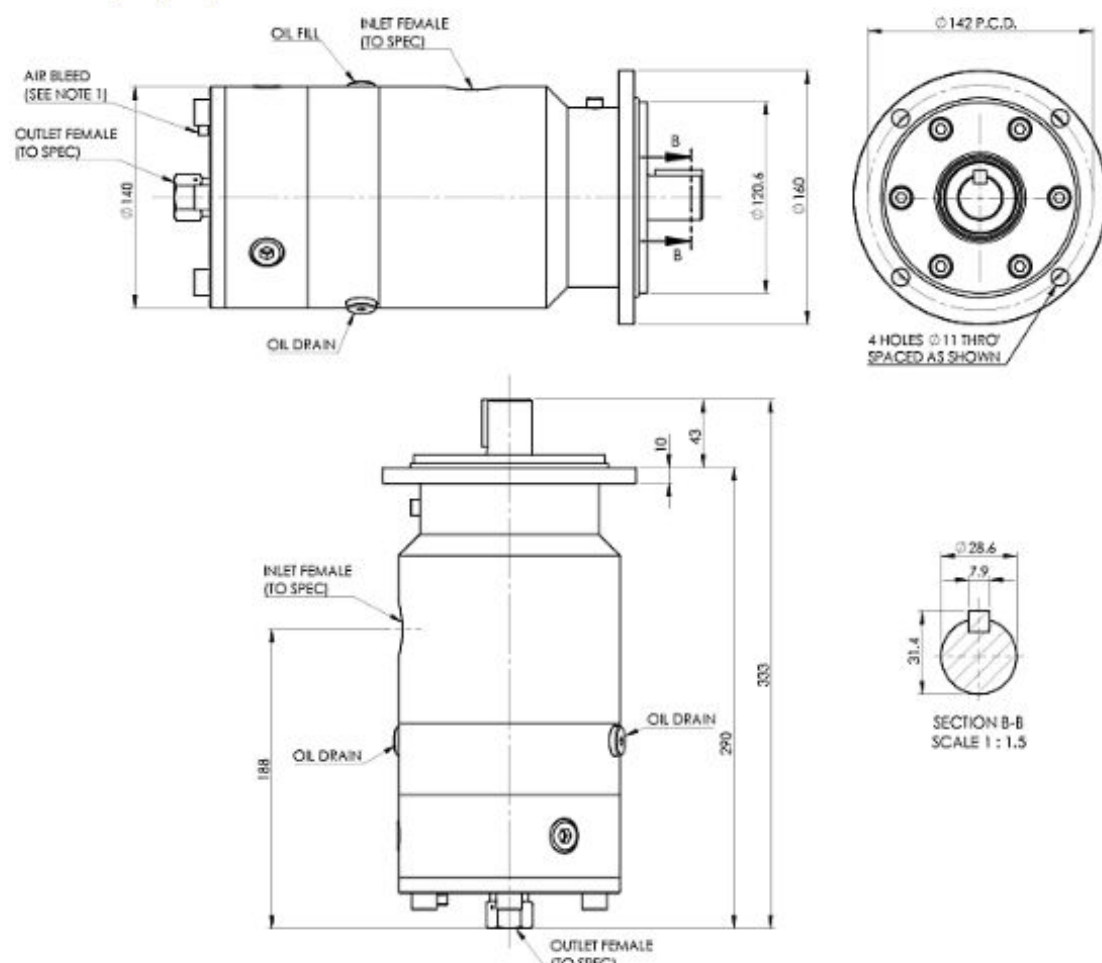
## Inlet Connection Options

- 04 - 3/4" BSP Female Inlet
- 09 - 3/4" NPT Female Inlet

## Outlet Connection Options

- 02 - 3/8" BSP Female Outlet (Maximum 700 bar)
- 03 - 1/2" BSP Female Outlet (Maximum 700 bar)
- 07 - 3/8" NPT Female Outlet (Maximum 800 bar)
- 12 - 3/8" MP Female Outlet

## Shaft coupled pump dimensions



## Direct coupled pump dimensions - IEC 100/112 Frame B34 Face Mount Shown

